

Celesta Hills

VILLAS & TOWNHOUSES

COLLECTION III

UPTOWN
CAIRO
HEART OF CAIRO

CAIRO FROM THE TOP

Uptown Cairo, the first and only integrated development in the heart of Cairo, offers a unique lifestyle away from the hustle & bustle of the city. Enter a world of beauty, relaxation and luxury through Emaar Drive. With direct access to the 6th of October Bridge, Cairo Airport & minutes away from Maadi, Heliopolis & New Cairo, Uptown Cairo is perched 200 meters above sea-level with breathtaking views of the majestic city of Cairo.



WELCOME TO CELESTA HILLS A HAVEN ABOVE THE CITY



From the moment you enter through the gates of Celesta Hills, your eyes are mesmerized by the golf on both sides, the gold and shimmering sun setting in the horizon and the city of Cairo as a backdrop. Celesta Hills leaves nothing to be desired.

METICULOUSLY MASTER-PLANNED



Celesta Hills occupies a central location in the heart of Uptown Cairo. Elevated and surrounded by Uptown Cairo's signature golf-course, these ultra-elegant homes benefit from 360° of inspirational views amid the community's natural cascading topography.

SPANISH INSPIRED ARCHITECTURE



At Celesta Hills the views will define your living experience. Whether its the rolling golf-course greens, the sun sinking into the distance or the glittering lights of the city, every home will have a view to revel in.

WORLD-CLASS AMENITIES & FACILITIES



Celesta Hills will be home to its very own community center. Boasting an array of facilities, Celesta Hills will never give its homeowners a reason to leave this paradise of tranquility.



Fully-finished homes



Swimming Pool



Community center



Gym



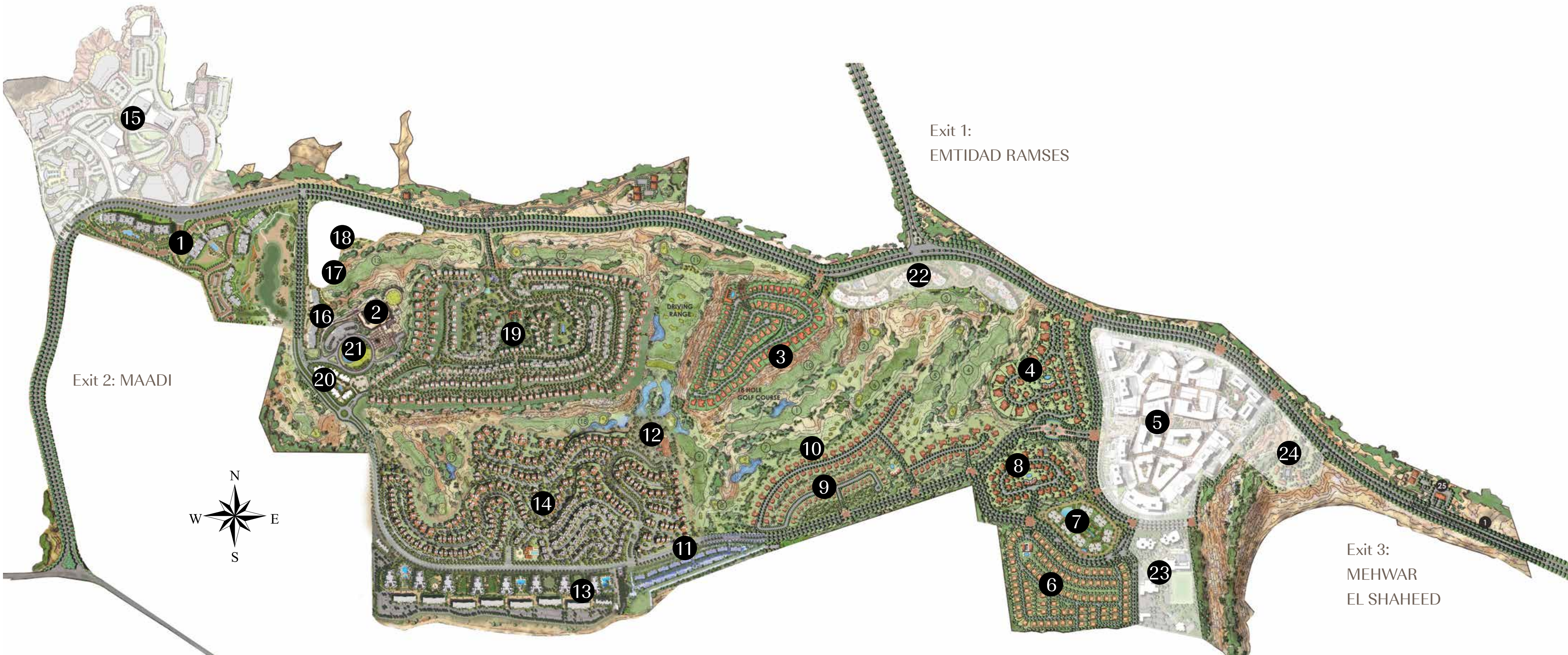
Kids playing area

FULLY-FINISHED INTERIORS



The homes at Celesta Hills are delivered fully-finished to the most desirable standards. Sleek and functional interiors grant you a one-of-a-kind opulent living environment.

UPTOWN CAIRO MASTERPLAN



- 01. The Fourteen Golf Residences
- 02. Sales Center
- 03. Terencia
- 04. Reyna
- 05. Emaar Square
- 06. Eleva

- 07. Aurora
- 08. Isadore
- 09. Alba Alyah
- 10. Alba Spendia
- 11. Alto
- 12. Uptown Golf Clubhouse

- 13. The Sierras Residence
- 14. Levana
- 15. Mixed Use Development
- 16. Golf Residences
- 17. Future Residential Development
- 18. Future Residential Development

- 19. Celesta Hills
- 20. Fountainside Residences
- 21. Fountainside Commercial Area
- 22. Azzura
- 23. School
- 24. Hotel (Future Development)

FLOOR PLANS



VILLA V6B (WITH GARDEN LEVEL)

1,115.3 M²

Ground Floor	340 M ²
First Floor	276 M ²
Garden level	376 M ²
Terraces & Loggia	85.3 M ²
Garage	38 M ²
Number of Rooms	6+Family Room



GROUND FLOOR



FIRST FLOOR



GARDEN LEVEL

DISCLAIMER:

- All room dimensions are measured to structural elements and exclude wall finishes and construction tolerances.
- All dimensions have been provided by our consultant architects.
- All materials, dimensions and drawings are approximate, information subject to change without notice.
- Actual villa area may vary from stated area. Drawings not to scale. The developer reserves the right to make revisions.
- Any colored images shown are indicative only, actual colors may vary depending on the scanning and printing methods.
- Floor plans may be mirrored depending on location on master plan.
- In the case of garden level option, stair and terrace details may vary.

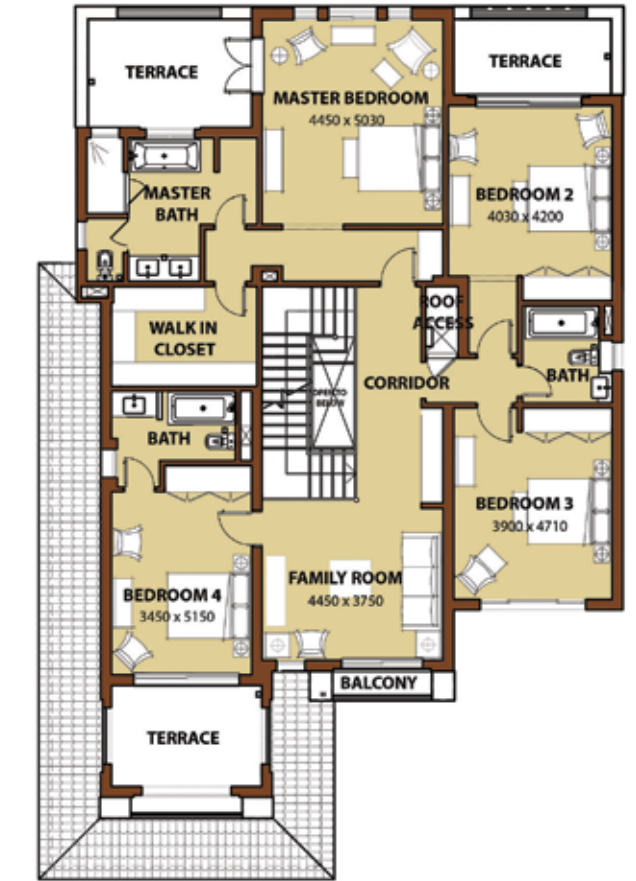
VILLA V2B (WITH GARDEN LEVEL)

687 M²

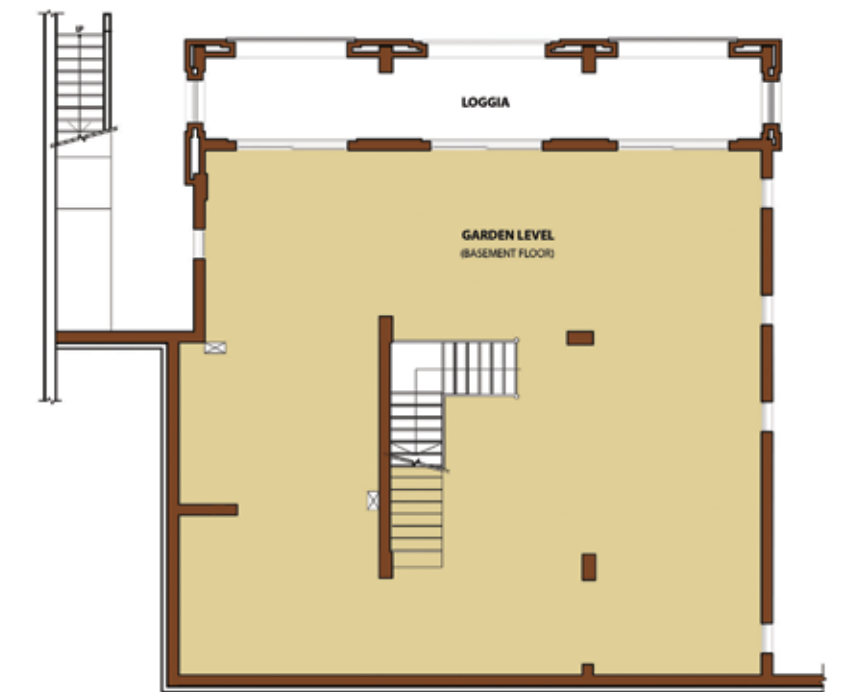
Ground Floor	192.4 M ²
First Floor	174.1 M ²
Terraces & Loggia	89.6 M ²
Garden Level	169 M ²
Garage	42.2 M ²
No. of Rooms	4+Family Room



GROUND FLOOR



FIRST FLOOR



GARDEN LEVEL

DISCLAIMER:

- All room dimensions are measured to structural elements and exclude wall finishes and construction tolerances.
- All dimensions have been provided by our consultant architects.
- All materials, dimensions and drawings are approximate, information subject to change without notice.
- Actual villa area may vary from stated area. Drawings not to scale. The developer reserves the right to make revisions.
- Any colored images shown are indicative only, actual colors may vary depending on the scanning and printing methods.
- Floor plans may be mirrored depending on location on master plan.
- In the case of garden level option, stair and terrace details may vary.

VILLA V2

478 M²

Ground Floor	192.4 M ²
First Floor	174.1 M ²
Terraces & Loggia	50.8 M ²
Garage	42.2 M ²
No. of Rooms	5+Family Room



GROUND FLOOR



FIRST FLOOR

DISCLAIMER:

- All room dimensions are measured to structural elements and exclude wall finishes and construction tolerances.
- All dimensions have been provided by our consultant architects.
- All materials, dimensions and drawings are approximate, information subject to change without notice.
- Actual villa area may vary from stated area. Drawings not to scale. The developer reserves the right to make revisions.
- Any colored images shown are indicative only, actual colors may vary depending on the scanning and printing methods.
- Floor plans may be mirrored depending on location on master plan.
- In the case of garden level option, stair and terrace details may vary.

VILLA V18B (WITH GARDEN LEVEL)

472.3 M²

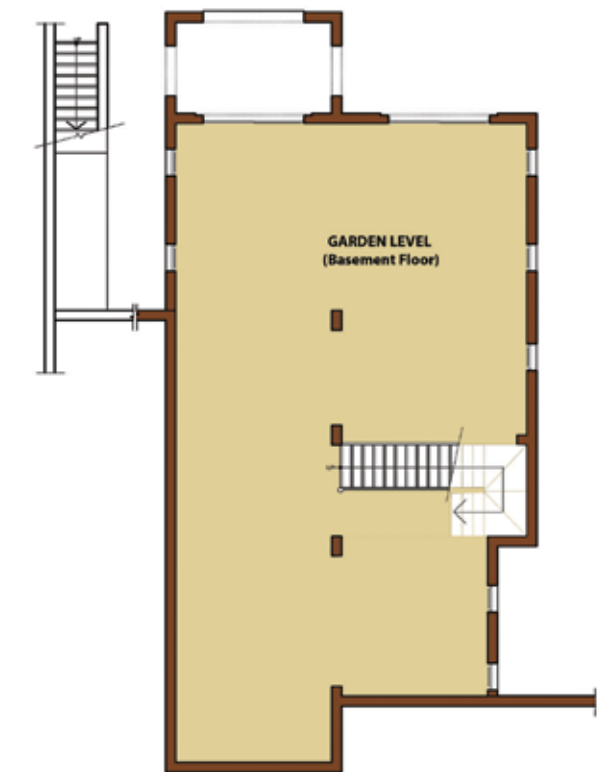
Ground Floor	146.8 M ²
First Floor	125.3 M ²
Terraces & Loggia	52.4 M ²
Garden Level	147.8 M ²
No. of Rooms	4+Family Room



GROUND FLOOR



FIRST FLOOR



GARDEN LEVEL

DISCLAIMER:

- All room dimensions are measured to structural elements and exclude wall finishes and construction tolerances.
- All dimensions have been provided by our consultant architects.
- All materials, dimensions and drawings are approximate, information subject to change without notice.
- Actual villa area may vary from stated area. Drawings not to scale. The developer reserves the right to make revisions.
- Any colored images shown are indicative only, actual colors may vary depending on the scanning and printing methods.
- Floor plans may be mirrored depending on location on master plan.
- In the case of garden level option, stair and terrace details may vary.

VILLA V18P (WITH PENTHOUSE)

386 M²

Ground Floor	146.8 M ²
First Floor	131.9 M ²
Terraces & Loggia	50 M ²
Penthouse	57.3 M ²
No. of Rooms	3+Family Room



GROUND FLOOR



FIRST FLOOR



PENTHOUSE

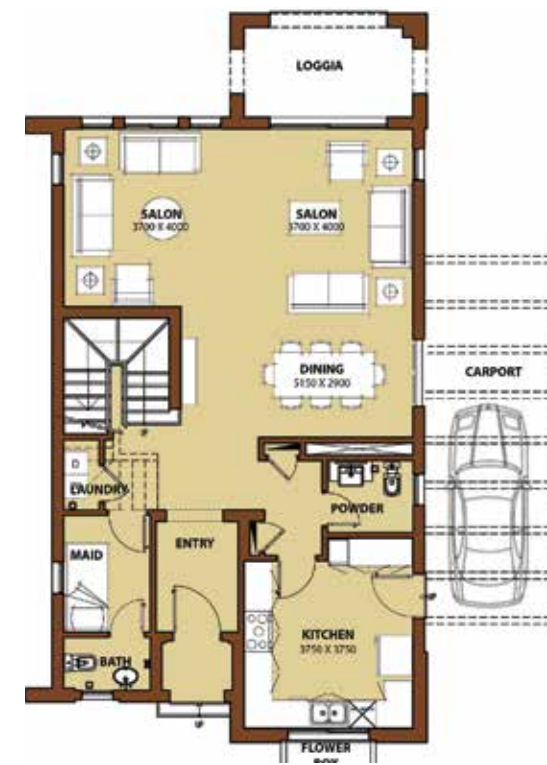
DISCLAIMER:

- All room dimensions are measured to structural elements and exclude wall finishes and construction tolerances.
- All dimensions have been provided by our consultant architects.
- All materials, dimensions and drawings are approximate, information subject to change without notice.
- Actual villa area may vary from stated area. Drawings not to scale. The developer reserves the right to make revisions.
- Any colored images shown are indicative only, actual colors may vary depending on the scanning and printing methods.
- Floor plans may be mirrored depending on location on master plan.
- In the case of garden level option, stair and terrace details may vary.

VILLA V16P (WITH PENTHOUSE)

304.6 M²

Ground Floor	108.4 M ²
First Floor	114.8 M ²
Terraces & Loggia	44.4 M ²
Penthouse	37 M ²
No. of Rooms	3+Family Room



GROUND FLOOR



FIRST FLOOR



PENTHOUSE

DISCLAIMER:

- All room dimensions are measured to structural elements and exclude wall finishes and construction tolerances.
- All dimensions have been provided by our consultant architects.
- All materials, dimensions and drawings are approximate, information subject to change without notice.
- Actual villa area may vary from stated area. drawings not to scale. the developer reserves the right to make revisions.
- Any colored images shown are indicative only, actual colors may vary depending on the scanning and printing methods.
- Floor plans may be mirrored depending on location on master plan.
- In the case of garden level option, stair and terrace details may vary.

Emaar Misr Sales Centers:

Uptown Cairo: Emtidad Ramsis St. exit from the 6th of October bridge

Capital Business Park: Ground floor B2 building, Sheikh Zayed, Giza

Heliopolis: 40, Thawra St.

Mivida: Mivida Business Park, Building 1, end of road 90 next to AUC new campus

Marassi: Social Hub, Sidi Abdel Rahman, Killo 133, North Coast Road, Matrouh

Call 16116 | www.uptowncairo-egypt.com