

• RESIDENCES •  
*Golf*



— FLOORPLANS

DUPLEXES - APARTMENTS - STUDIOS



• RESIDENCES •  
*Golf*

# WELCOME TO UPTOWN CAIRO

Elevations that serves as a retreat for the soul, mind, and body as you revel in the mesmerizing sceneries of golf and city view. All while being at the center of it all. The heart of Cairo, is a development designed to help you find your center.







## CENTRALLY LOCATED

---

## EASY ACCESS TO EVERYWHERE

Uptown Cairo is a one-of-a-kind development in Egypt. Situated in the heart of our capital city, it is comfortably accessible for anyone commuting from West or East Cairo. Enjoy living in a graceful community at a truly unique location.







# ZAMALEK

OCTOBER BRIDGE - EMTEDAD RAMSIS  
EMAAR DRIVE  
35 MINUTES

# DOWNTOWN

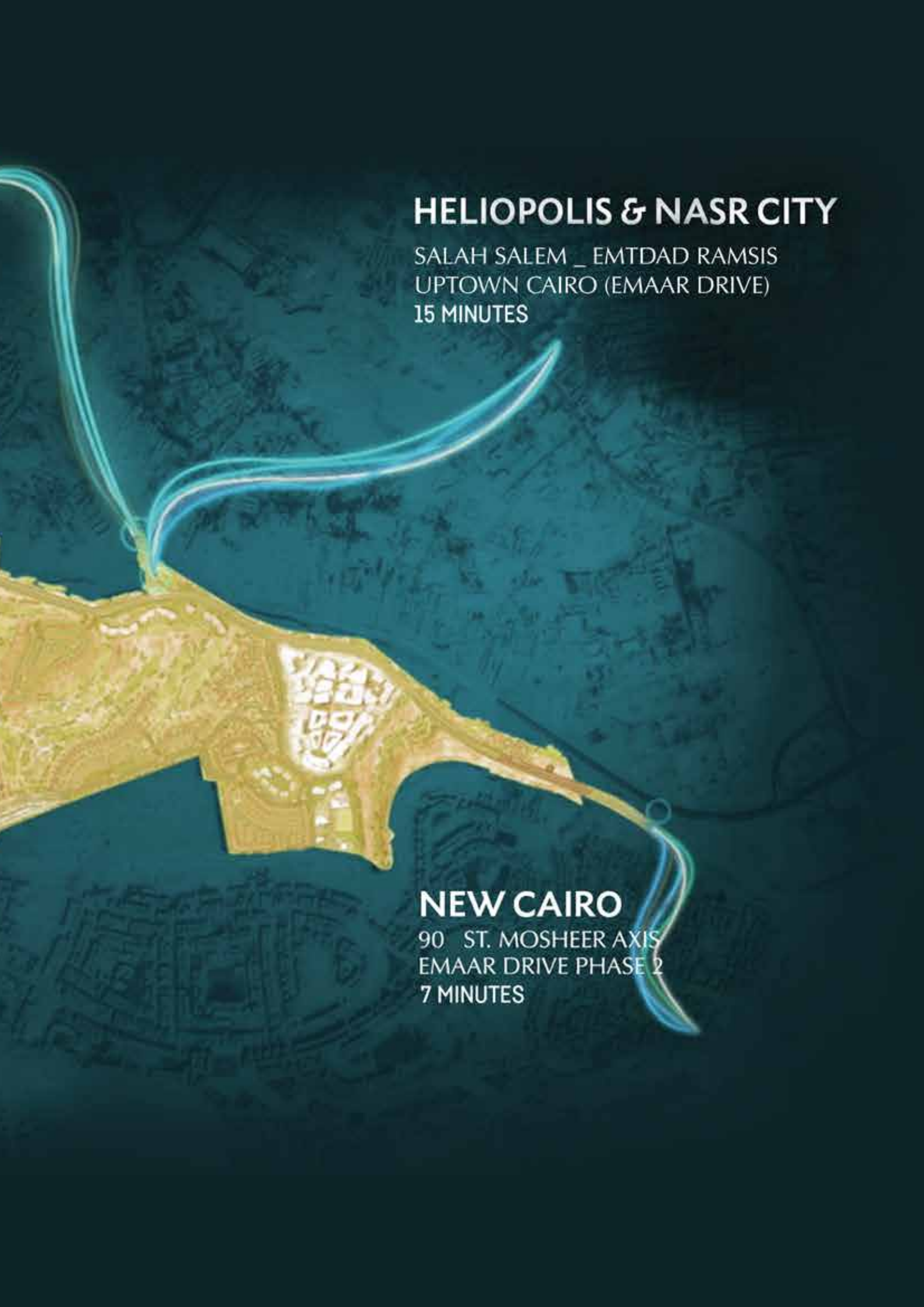
SALAH SALEM  
UPTOWN CAIRO (MOKATTAM GATE)  
25 MINUTES

# MAADI

AL MONEIB AXIS - EL SALLAB RAMP  
20 MINUTES







## HELIOPOLIS & NASR CITY

SALAH SALEM \_ EMTDAD RAMSIS  
UPTOWN CAIRO (EMAAR DRIVE)  
15 MINUTES

## NEW CAIRO

90 ST. MOSHEER AXIS  
EMAAR DRIVE PHASE 2  
7 MINUTES

## WELCOME TO GOLF RESIDENCES

Serene Golf living with a contemporary chic flavor, A perfect expression of indulgence that inspires the soul. Live in your own premium apartment directly on the golf course where it is all about simplicity and hassle-free modernity, unmatched views of green expanses with a promenade for relaxing strolls. Golf residences is your elevated, exclusive green retreat in Uptown Cairo.

*The only apartments directly  
on the golf course in Egypt.*







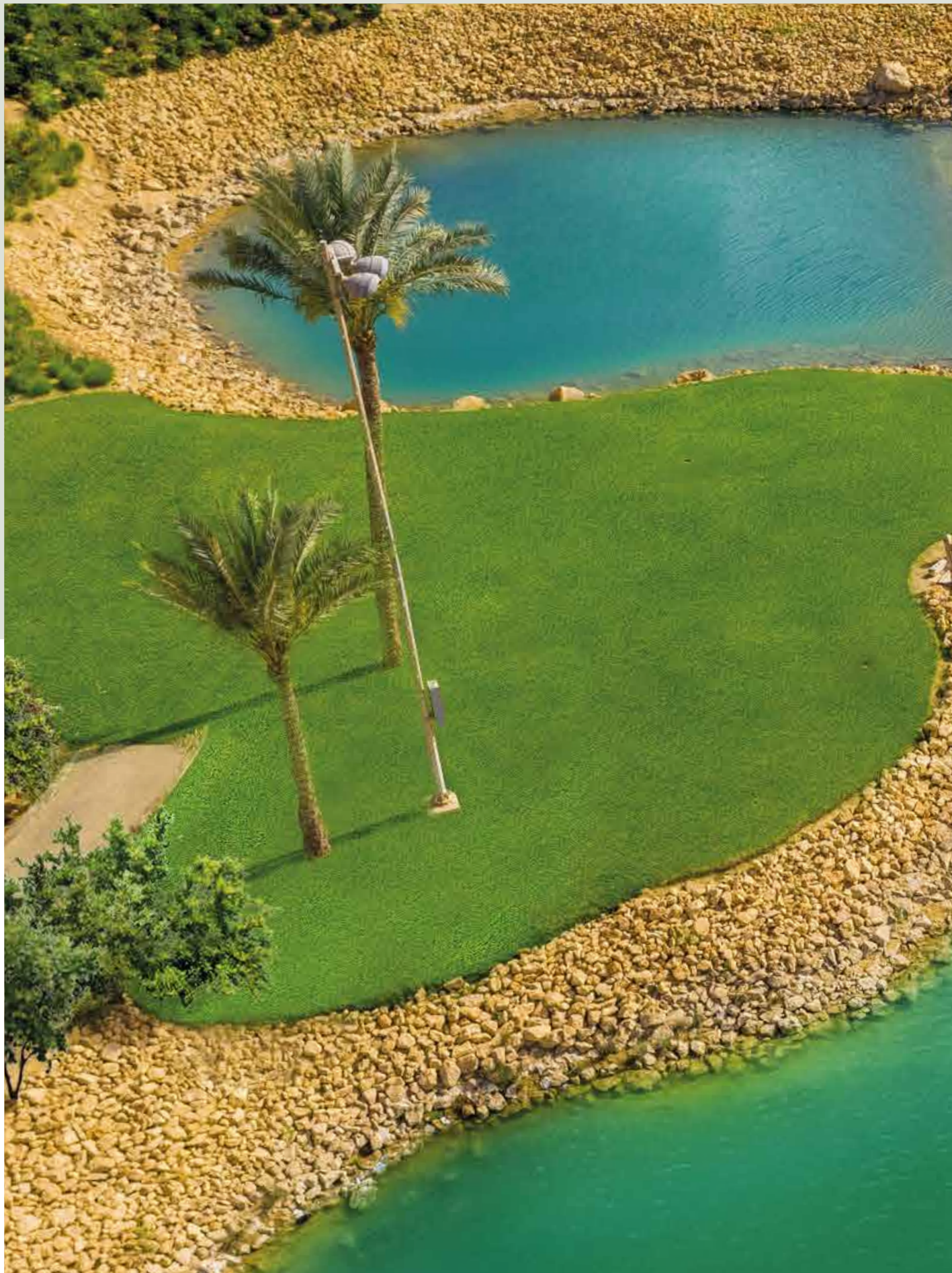
*Wake up to the soothing breeze of air coming from the vast green sheets of the 18 hole golf course. A surreal view that will set your morning mood to a wonderful day.*















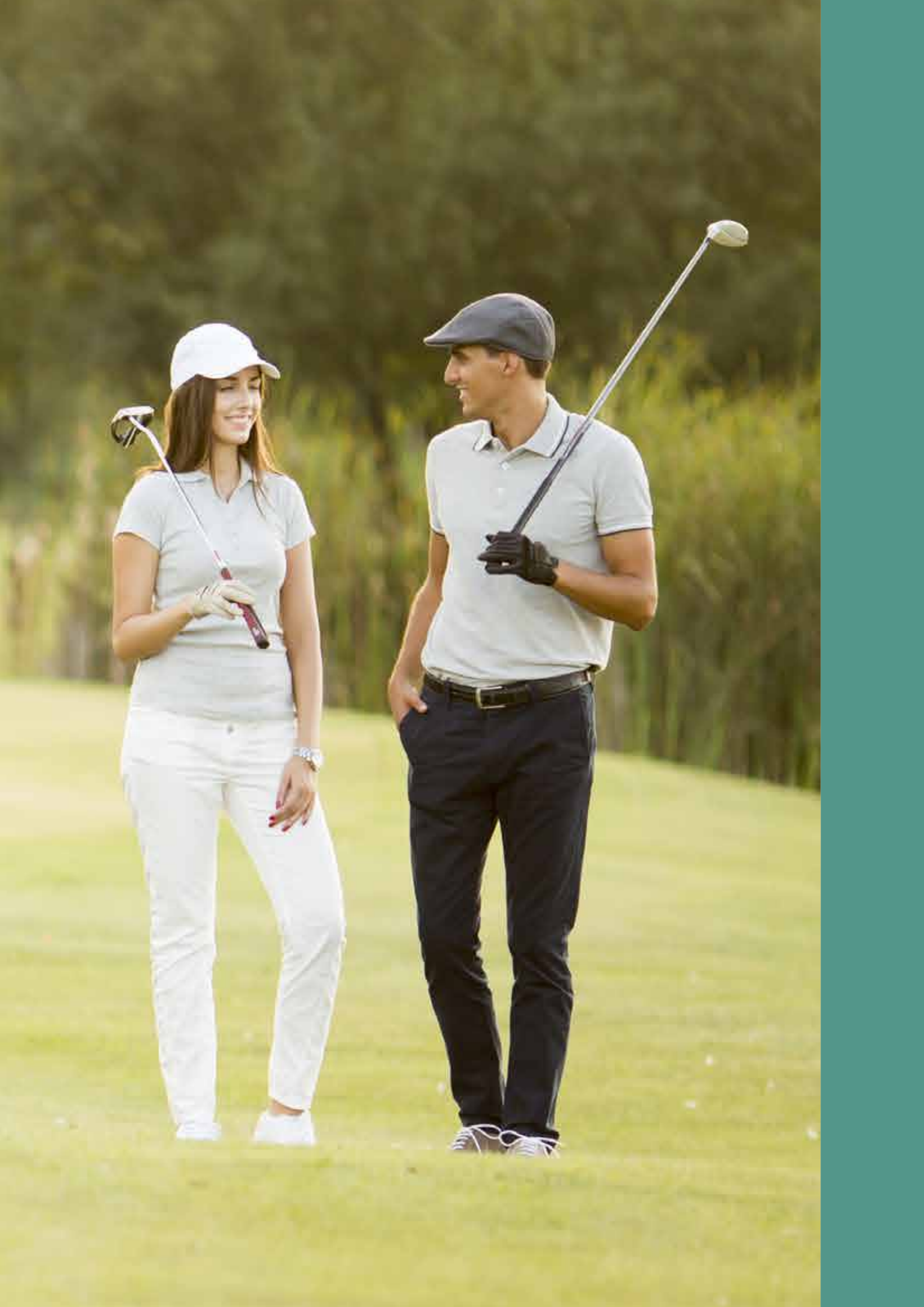
*The beauty of Golf is not the game itself, but  
the calming course in which the game takes  
place amidst vast green hills.*





## EXQUISITE GOLF LIVING

A lifestyle of exceptional moments and prominent company, all complemented with lavish greenery.





*The expanse of  
green serenity*







*An immense lifestyle experience  
along the golf course*









*Lush fairways & open spaces  
outlined by a walkable  
golf promenade*













*Enjoy an ambience of relaxation through  
a picturesque scenery of pristine pools with  
exquisite facilities made to ease your days.*





## REINVIGORATE YOUR SENSES

With stellar design lies an array of top-notch amenities within reach. Having a pool in the center, a play area for children to explore their heights, and a multipurpose community center, Golf Residences offers an unrivalled resort-like lifestyle.



**Swimming pool  
overlooking golf course**



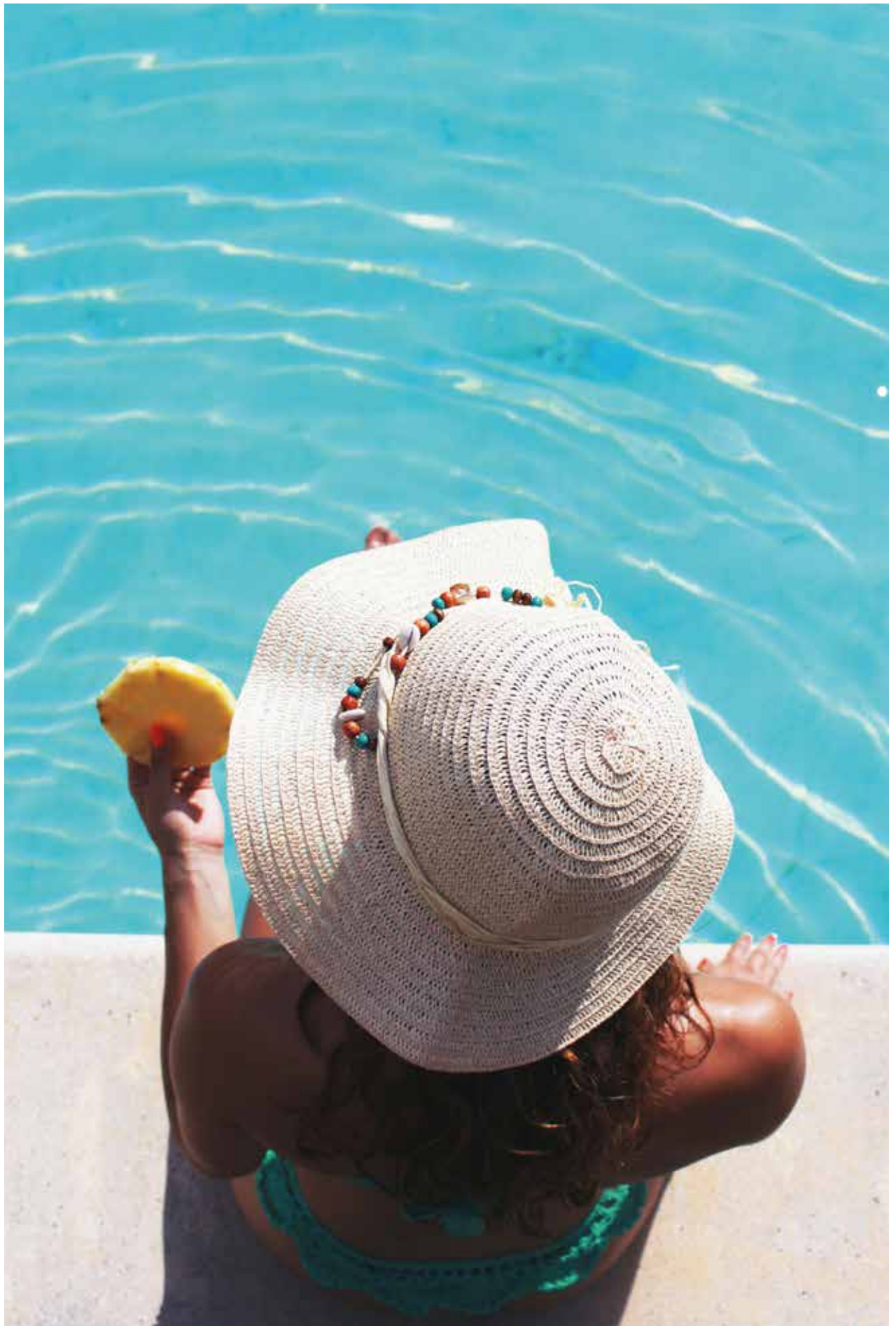
**Direct access  
to golf promenade**



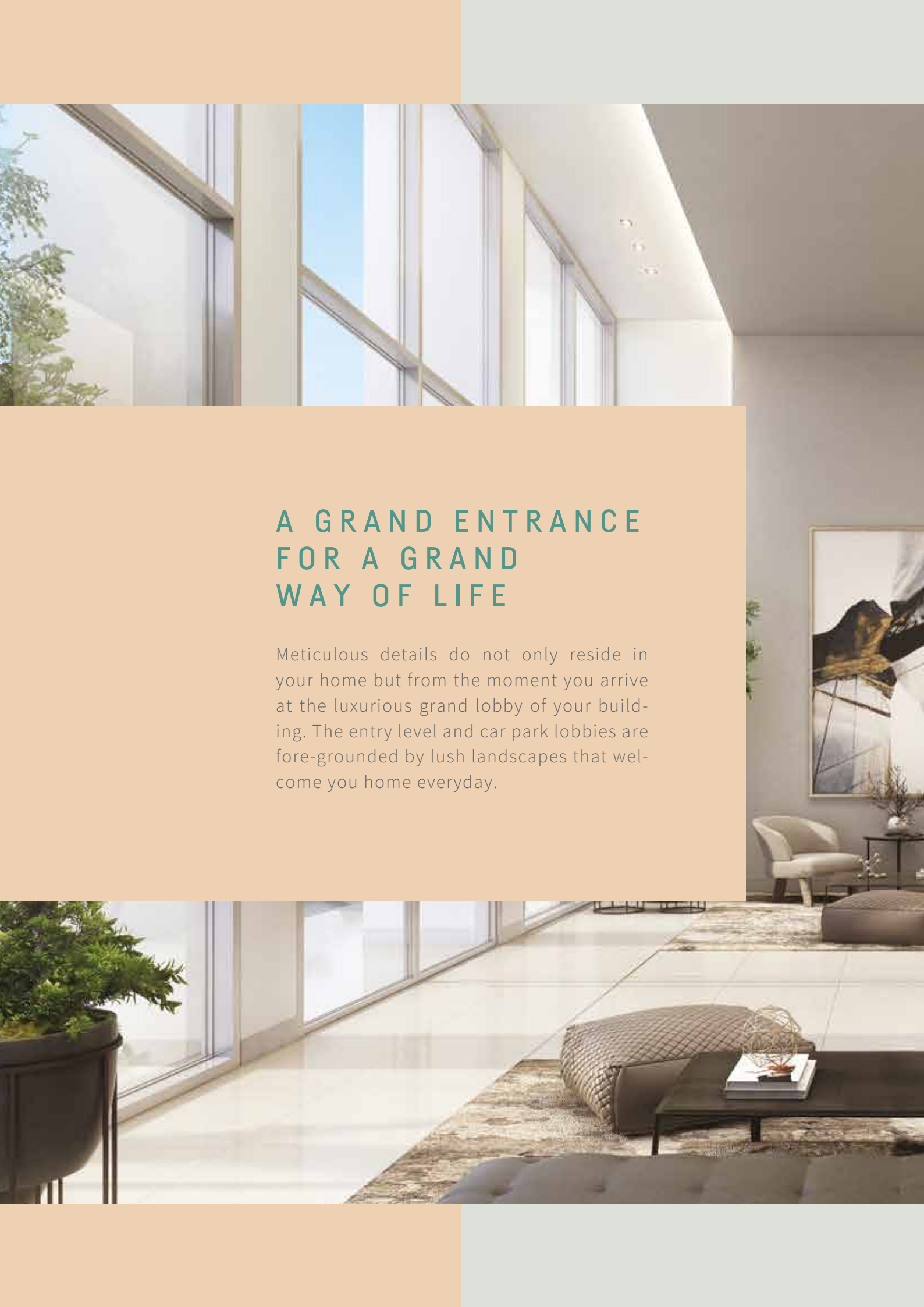
**Community center  
and gym on ground level**



**Kids playing area**

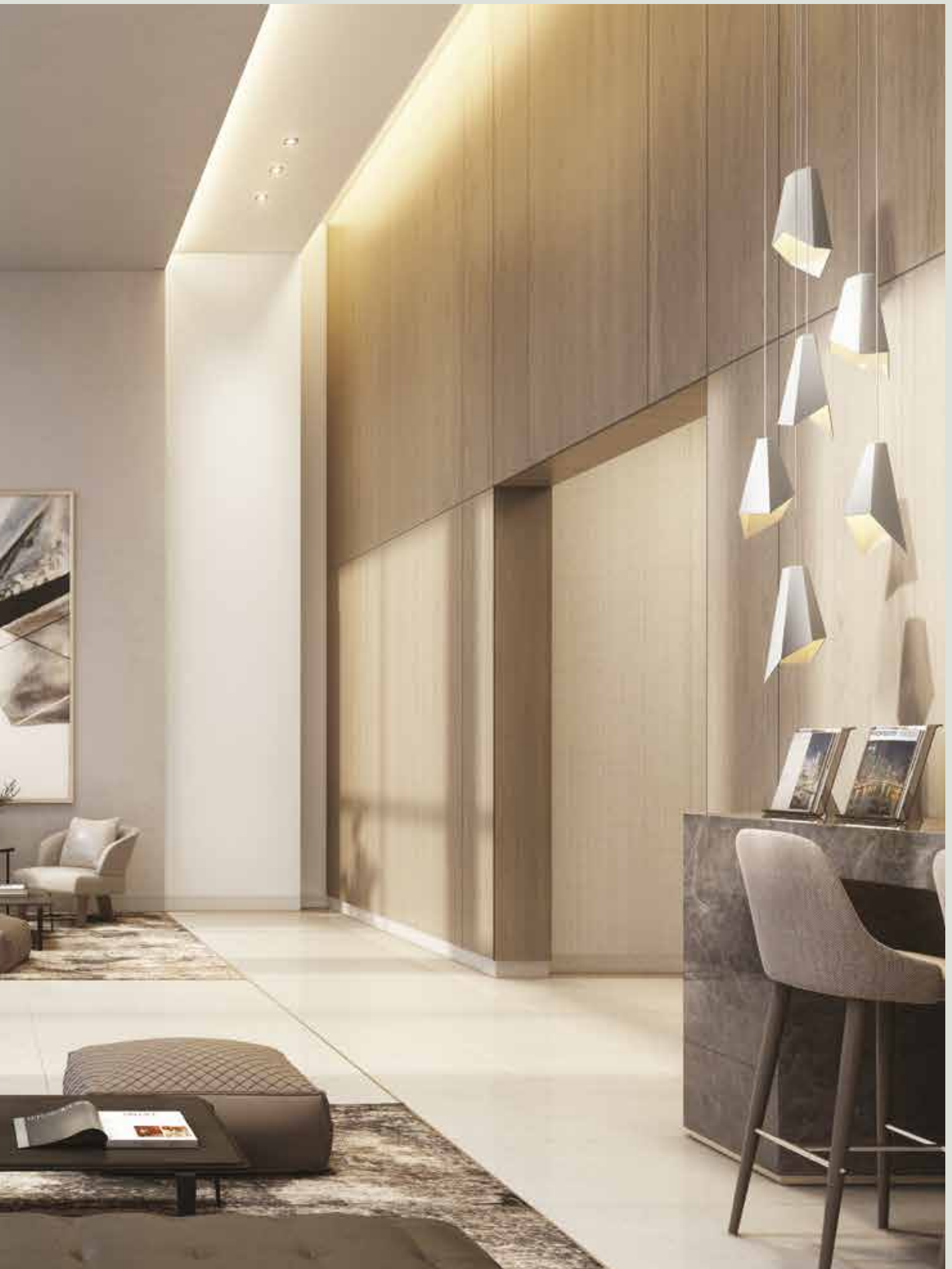




The image is a composite of two photographs. The top photograph shows a long, bright hallway or lobby with a series of tall, narrow windows on the left side, looking out onto a green landscape. The ceiling is white with recessed lighting. The bottom photograph shows a more detailed view of a lounge area. It features a large, patterned rug, a dark coffee table with a decorative object and books, a light-colored armchair, and a large abstract painting on the wall. The floor is made of large, light-colored tiles. The overall aesthetic is clean, modern, and luxurious.

## A GRAND ENTRANCE FOR A GRAND WAY OF LIFE

Meticulous details do not only reside in your home but from the moment you arrive at the luxurious grand lobby of your building. The entry level and car park lobbies are fore-grounded by lush landscapes that welcome you home everyday.









## FULLY FINISHED INTERIORS SLEEK & CHIC

Golf Residences offer lavish fully finished interiors that pay attention to every detail bringing together beauty and practicality. With a neutral colour palette creating layers of contrast, these contemporary chic interiors have depth and warmth for a relaxed yet sophisticated setting.





01. The Fourteen Golf Residences	07. Aurora
02. Sales Center	08. Isadore
03. Terencia	09. Alba Alyah
04. Reyna	10. Alba Spendia
05. Emaar Square	11. Alto
06. Eleva	12. Uptown Golf Clubhouse



13. The Sierras Residence	19. Celesta Hills
14. Levana	20. Fountainside Residences
15. Mixed Use Development	21. Future Development
16. Golf Residences	22. Azzura
17. Future Residential Development	23. School
18. Future Residential Development	24. Hotel [Future Development]













A close-up photograph of a green palm frond, showing the intricate texture of the leaflets. The frond is illuminated from the side, creating a strong contrast between the bright green and the deep shadows. The text "YOUR HEAVENLY HOME" is centered over the image in a clean, white, sans-serif font.

YOUR  
HEAVENLY  
HOME



# STUDIO

Sellable Area	64.1	m <sup>2</sup>
Terrace Area	-	m <sup>2</sup>
Utility Area	-	m <sup>2</sup>
<b>Total Gross Area</b>	<b>64.1</b>	<b>m<sup>2</sup></b>

## Unit Number

B-02-09

B-03-09

B-04-09

### DISCLAIMER:

- All room dimensions are measured to structural elements and exclude wall finishes and construction tolerances.
- All dimensions have been provided by our consultant architects.
- All materials, dimensions and drawings are approximate, information subject to change without notice.
- Actual apartment area may vary from stated area. drawings not to scale. the developer reserves the right to make revisions.
- Any colored images shown are indicative only, actual colors may vary depending on the scanning and printing methods.
- Floor plans may be mirrored depending on location on master plan.
- In the case of garden level option, stair and terrace details may vary.
- R refers to mirrored units.

LANDSCAPE VIEW

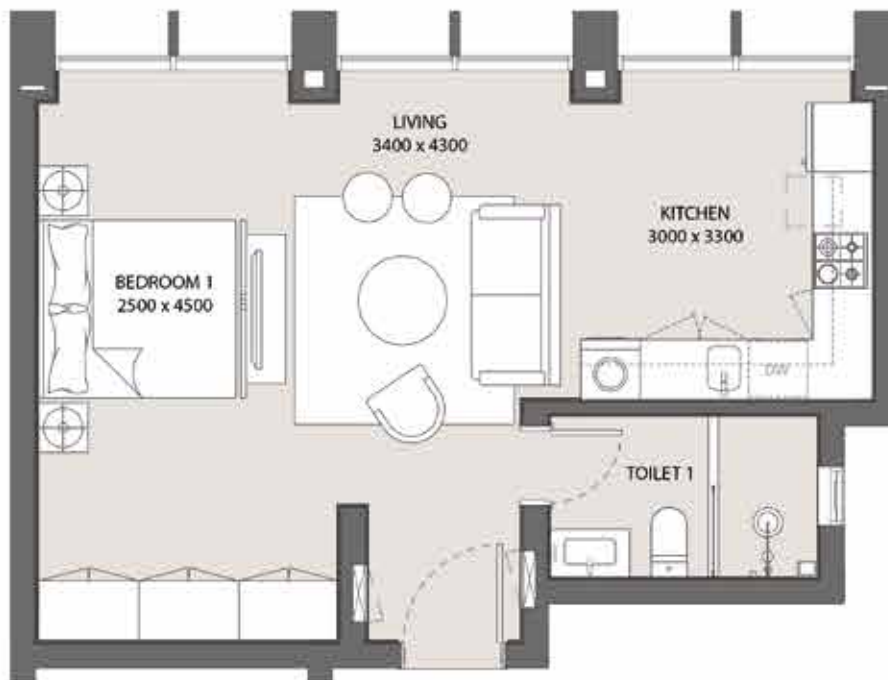
09

GOLF HOLE 14 VIEW



LEVEL 02,03,04

GOLF HOLE 13 VIEW





# ONE BEDROOM APARTMENT

Sellable Area	87.3	m <sup>2</sup>
Terrace Area	19.3	m <sup>2</sup>
Utility Area	-	m <sup>2</sup>
<b>Total Gross Area</b>	<b>106.6</b>	<b>m<sup>2</sup></b>

## Unit Number

B-01-01

B-02-01

### DISCLAIMER:

- All room dimensions are measured to structural elements and exclude wall finishes and construction tolerances.
- All dimensions have been provided by our consultant architects.
- All materials, dimensions and drawings are approximate, information subject to change without notice.
- Actual apartment area may vary from stated area. drawings not to scale. the developer reserves the right to make revisions.
- Any colored images shown are indicative only, actual colors may vary depending on the scanning and printing methods.
- Floor plans may be mirrored depending on location on master plan.
- In the case of garden level option, stair and terrace details may vary.
- R refers to mirrored units.

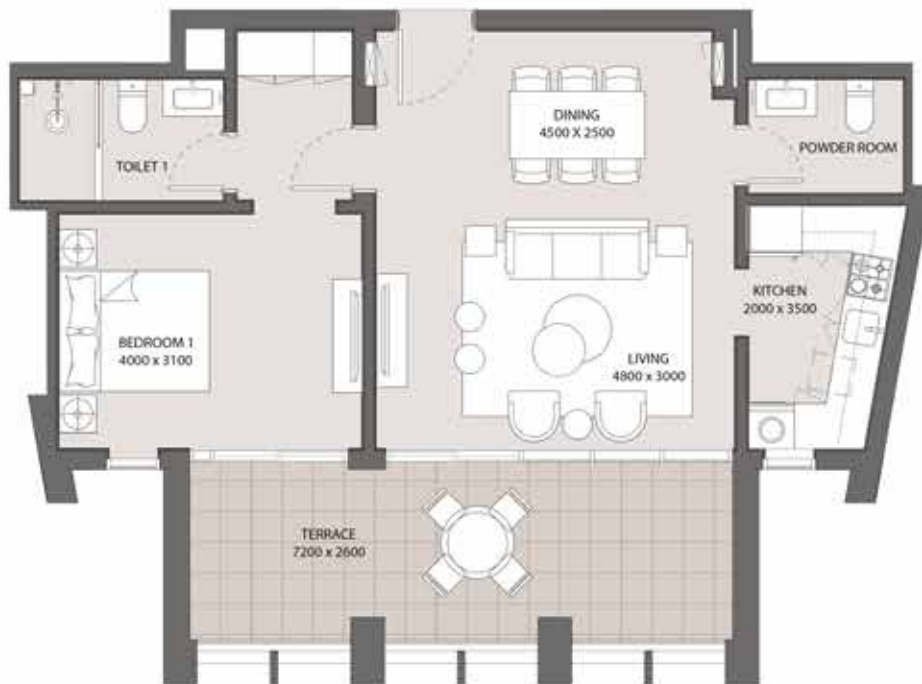
LANDSCAPE VIEW

GOLF HOLE 14 VIEW



LEVEL 01, 02

GOLF HOLE 13 VIEW





# TWO BEDROOM APARTMENT

Sellable Area	137.4	m <sup>2</sup>
Terrace Area	3.6	m <sup>2</sup>
Utility Area	3.6	m <sup>2</sup>
Outdoor Terrace	22	m <sup>2</sup>
<b>Total Gross Area</b>	<b>166.9</b>	<b>m<sup>2</sup></b>

## Unit Number

B-EL-03 R

B-EI-05

B-EL-11

B-EL-13 R

## DISCLAIMER:

- All room dimensions are measured to structural elements and exclude wall finishes and construction tolerances.
- All dimensions have been provided by our consultant architects.
- All materials, dimensions and drawings are approximate, information subject to change without notice.
- Actual apartment area may vary from stated area. drawings not to scale. the developer reserves the right to make revisions.
- Any colored images shown are indicative only, actual colors may vary depending on the scanning and printing methods.
- Floor plans may be mirrored depending on location on master plan.
- In the case of garden level option, stair and terrace details may vary.
- R refers to mirrored units.

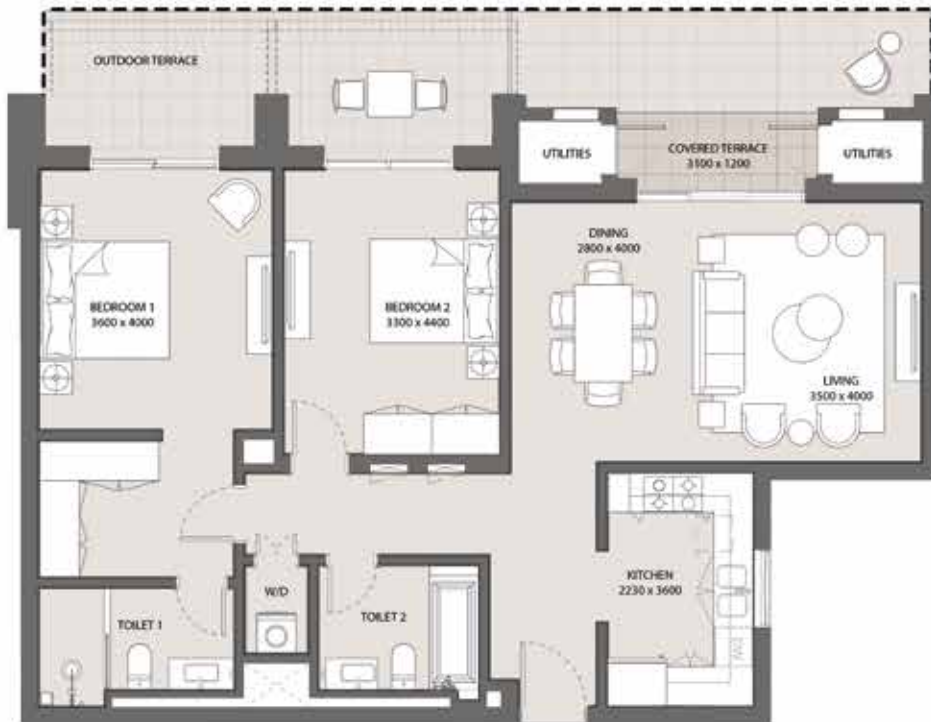
LANDSCAPE VIEW

GOLF HOLE 14 VIEW



ENTRY LEVEL

GOLF HOLE 13 VIEW





# TWO BEDROOM APARTMENT

Sellable Area	136.1	m <sup>2</sup>
Terrace Area	3.8	m <sup>2</sup>
Utility Area	4.2	m <sup>2</sup>
<b>Total Gross Area</b>	<b>144</b>	<b>m<sup>2</sup></b>

## Unit Number

B-01-03 R

B-01-05

B-01-11

B-01-13 R

## DISCLAIMER:

- All room dimensions are measured to structural elements and exclude wall finishes and construction tolerances.
- All dimensions have been provided by our consultant architects.
- All materials, dimensions and drawings are approximate, information subject to change without notice.
- Actual apartment area may vary from stated area. drawings not to scale. the developer reserves the right to make revisions.
- Any colored images shown are indicative only, actual colors may vary depending on the scanning and printing methods.
- Floor plans may be mirrored depending on location on master plan.
- In the case of garden level option, stair and terrace details may vary.
- R refers to mirrored units.

LANDSCAPE VIEW

GOLF HOLE 14 VIEW



GOLF HOLE 13 VIEW





# TWO BEDROOM APARTMENT

Sellable Area	136	m <sup>2</sup>
Terrace Area	4.8	m <sup>2</sup>
Utility Area	4.2	m <sup>2</sup>
<b>Total Gross Area</b>	<b>145</b>	<b>m<sup>2</sup></b>

## Unit Number

B-02-03 R

B-02-05

B-02-11

B-02-13 R

B-03-03 R

B-03-05

B-03-11

B-03-13 R

## DISCLAIMER:

- All room dimensions are measured to structural elements and exclude wall finishes and construction tolerances.
- All dimensions have been provided by our consultant architects.
- All materials, dimensions and drawings are approximate, information subject to change without notice.
- Actual apartment area may vary from stated area. drawings not to scale. the developer reserves the right to make revisions.
- Any colored images shown are indicative only, actual colors may vary depending on the scanning and printing methods.
- Floor plans may be mirrored depending on location on master plan.
- In the case of garden level option, stair and terrace details may vary.
- R refers to mirrored units.

LANDSCAPE VIEW

GOLF HOLE 14 VIEW



GOLF HOLE 13 VIEW





# TWO BEDROOM APARTMENT

Sellable Area	136.1	m <sup>2</sup>
Terrace Area	4.8	m <sup>2</sup>
Utility Area	-	m <sup>2</sup>
<b>Total Gross Area</b>	<b>140.9</b>	<b>m<sup>2</sup></b>

## Unit Number

B-04-03 R

B-04-05

B-04-11

B-04-13 R

## DISCLAIMER:

- All room dimensions are measured to structural elements and exclude wall finishes and construction tolerances.
- All dimensions have been provided by our consultant architects.
- All materials, dimensions and drawings are approximate, information subject to change without notice.
- Actual apartment area may vary from stated area. drawings not to scale. the developer reserves the right to make revisions.
- Any colored images shown are indicative only, actual colors may vary depending on the scanning and printing methods.
- Floor plans may be mirrored depending on location on master plan.
- In the case of garden level option, stair and terrace details may vary.
- R refers to mirrored units.

LANDSCAPE VIEW

GOLF HOLE 14 VIEW



GOLF HOLE 13 VIEW





# TWO BEDROOM DUPLEX

Sellable Area	222.5	m <sup>2</sup>
Terrace Area	-	m <sup>2</sup>
Utility Area	-	m <sup>2</sup>
<b>Total Gross Area</b>	<b>222.5</b>	<b>m<sup>2</sup></b>

## Unit Number

B-GL-01 [Garden & Entry Level]

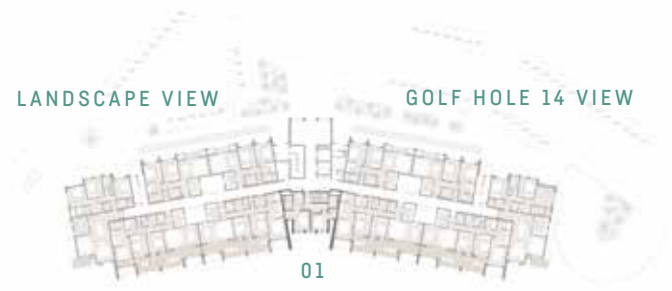
B-03-01 [Level 03 & 04]

### DISCLAIMER:

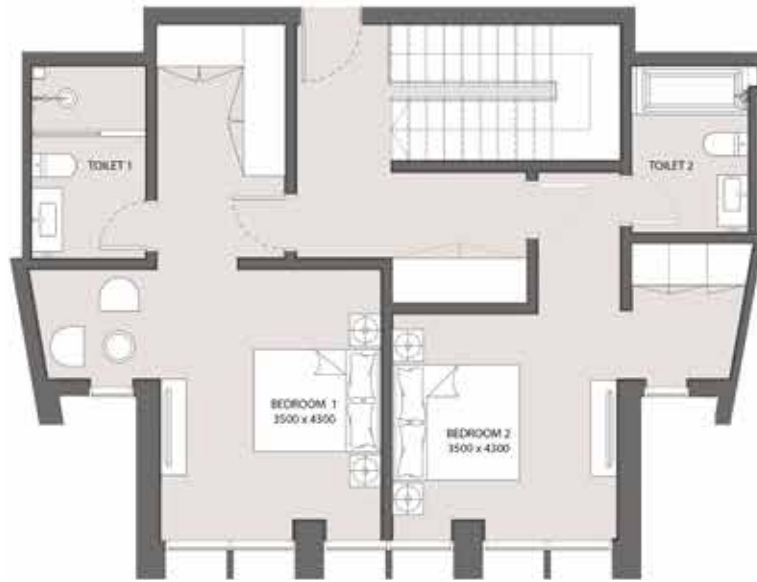
- All room dimensions are measured to structural elements and exclude wall finishes and construction tolerances.
- All dimensions have been provided by our consultant architects.
- All materials, dimensions and drawings are approximate, information subject to change without notice.
- Actual apartment area may vary from stated area. drawings not to scale. the developer reserves the right to make revisions.
- Any colored images shown are indicative only, actual colors may vary depending on the scanning and printing methods.
- Floor plans may be mirrored depending on location on master plan.
- In the case of garden level option, stair and terrace details may vary.
- R refers to mirrored units.



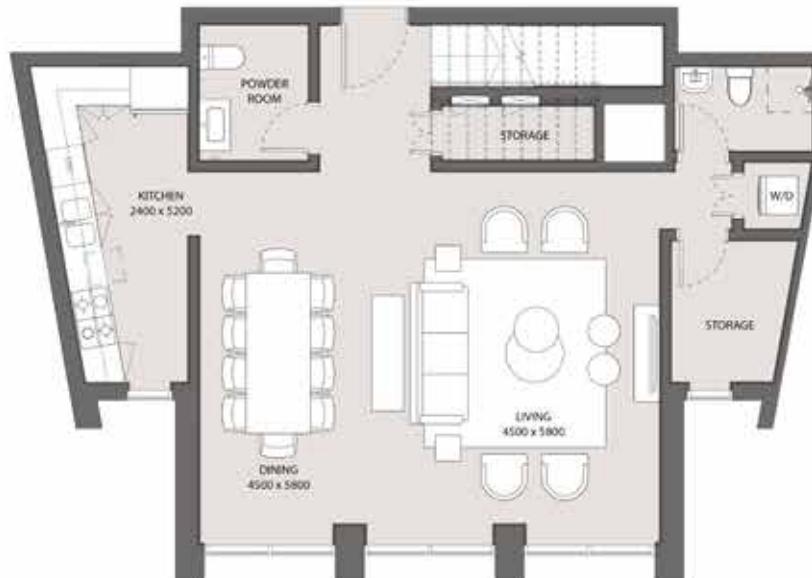
GARDEN LEVEL  
GOLF HOLE 13 VIEW



ENTRY LEVEL  
GOLF HOLE 13 VIEW



UPPER FLOOR



LOWER FLOOR



# THREE BEDROOM APARTMENT

Sellable Area	207	m <sup>2</sup>
Terrace Area	-	m <sup>2</sup>
Utility Area	-	m <sup>2</sup>
Patio	47	m <sup>2</sup>
<b>Total Gross Area</b>	<b>254</b>	<b>m<sup>2</sup></b>

## Unit Number

B-GL-02 R

B-GL-06

B-GL-10

B-GL-14 R

B-EL-02 R

B-EL-06

B-EL-10

B-EL-14 R

## DISCLAIMER:

- All room dimensions are measured to structural elements and exclude wall finishes and construction tolerances.
- All dimensions have been provided by our consultant architects.
- All materials, dimensions and drawings are approximate, information subject to change without notice.
- Actual apartment area may vary from stated area. drawings not to scale. the developer reserves the right to make revisions.
- Any colored images shown are indicative only, actual colors may vary depending on the scanning and printing methods.
- Floor plans may be mirrored depending on location on master plan.
- In the case of garden level option, stair and terrace details may vary.
- R refers to mirrored units.

LANDSCAPE  
VIEW

GOLF HOLE 14 VIEW



GARDEN & ENTRY LEVEL

GOLF HOLE 13 VIEW





# THREE BEDROOM APARTMENT

Sellable Area	189.1	m <sup>2</sup>
Terrace Area	11.8	m <sup>2</sup>
Utility Area	41.1	m <sup>2</sup>
<b>Total Gross Area</b>	<b>242</b>	<b>m<sup>2</sup></b>

## Unit Number

B-01-02 R

B-01-06

B-01-10

B-01-14 R

### DISCLAIMER:

- All room dimensions are measured to structural elements and exclude wall finishes and construction tolerances.
- All dimensions have been provided by our consultant architects.
- All materials, dimensions and drawings are approximate, information subject to change without notice.
- Actual apartment area may vary from stated area. drawings not to scale. the developer reserves the right to make revisions.
- Any colored images shown are indicative only, actual colors may vary depending on the scanning and printing methods.
- Floor plans may be mirrored depending on location on master plan.
- In the case of garden level option, stair and terrace details may vary.
- R refers to mirrored units.

LANDSCAPE VIEW

GOLF HOLE 14 VIEW



LEVEL 01

GOLF HOLE 13 VIEW



# THREE BEDROOM APARTMENT

Sellable Area	185.9	m <sup>2</sup>
Terrace Area	11.8	m <sup>2</sup>
Utility Area	-	m <sup>2</sup>
<b>Total Gross Area</b>	<b>197.7</b>	<b>m<sup>2</sup></b>

## Unit Number

B-02-02 R	B-03-10
B-02-06	B-03-14 R
B-02-10	B-04-02 R
B-02-14 R	B-04-06
B-03-02 R	B0-04-10
B-03-06	B-04-14 R

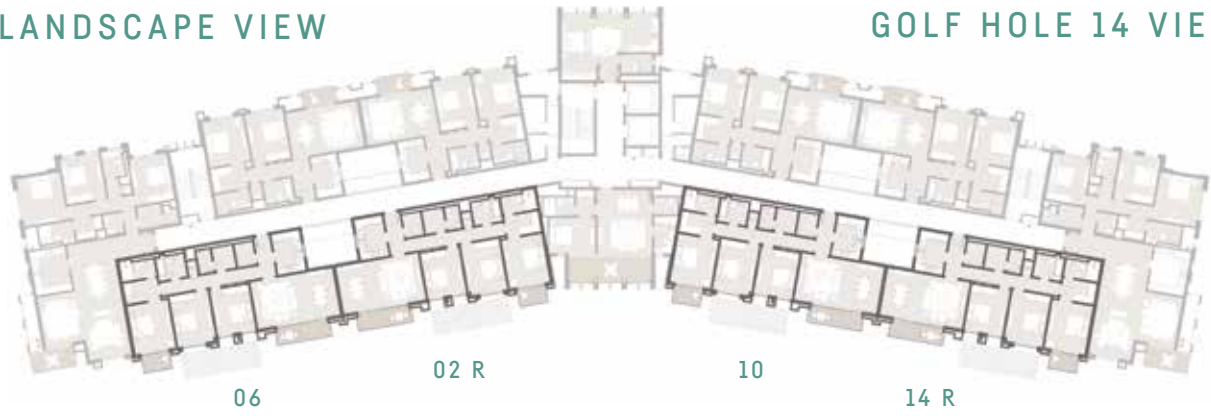
### DISCLAIMER:

- All room dimensions are measured to structural elements and exclude wall finishes and construction tolerances.
- All dimensions have been provided by our consultant architects.
- All materials, dimensions and drawings are approximate, information subject to change without notice.
- Actual apartment area may vary from stated area. drawings not to scale. the developer reserves the right to make revisions.
- Any colored images shown are indicative only, actual colors may vary depending on the scanning and printing methods.
- Floor plans may be mirrored depending on location on master plan.
- In the case of garden level option, stair and terrace details may vary.
- R refers to mirrored units.



LANDSCAPE VIEW

GOLF HOLE 14 VIEW



LEVEL 02, 03, 04

GOLF HOLE 13 VIEW



# THREE BEDROOM APARTMENT

Sellable Area	221.5	m <sup>2</sup>
Terrace Area	7.5	m <sup>2</sup>
Utility Area	10.8	m <sup>2</sup>
<b>Total Gross Area</b>	<b>239.8</b>	<b>m<sup>2</sup></b>

## Unit Number

B-EL-15

B-01-15

B-02-15

B-03-15

B-04-15

## DISCLAIMER:

- All room dimensions are measured to structural elements and exclude wall finishes and construction tolerances.
- All dimensions have been provided by our consultant architects.
- All materials, dimensions and drawings are approximate, information subject to change without notice.
- Actual apartment area may vary from stated area. drawings not to scale. the developer reserves the right to make revisions.
- Any colored images shown are indicative only, actual colors may vary depending on the scanning and printing methods.
- Floor plans may be mirrored depending on location on master plan.
- In the case of garden level option, stair and terrace details may vary.
- R refers to mirrored units.

LANDSCAPE VIEW

GOLF HOLE 14 VIEW

15



ENTRY LEVEL 01, 02, 03, 04

GOLF HOLE 13 VIEW





# THREE BEDROOM APARTMENT

Sellable Area	221.5	m <sup>2</sup>
Terrace Area	7.5	m <sup>2</sup>
Utility Area	10.8	m <sup>2</sup>
<b>Total Gross Area</b>	<b>239.8</b>	<b>m<sup>2</sup></b>

## Unit Number

B-EL-07 R

B-01-07 R

B-02-07 R

B-03-07 R

B-04-07 R

## DISCLAIMER:

- All room dimensions are measured to structural elements and exclude wall finishes and construction tolerances.
- All dimensions have been provided by our consultant architects.
- All materials, dimensions and drawings are approximate, information subject to change without notice.
- Actual apartment area may vary from stated area. drawings not to scale. the developer reserves the right to make revisions.
- Any colored images shown are indicative only, actual colors may vary depending on the scanning and printing methods.
- Floor plans may be mirrored depending on location on master plan.
- In the case of garden level option, stair and terrace details may vary.
- R refers to mirrored units.

LANDSCAPE VIEW

GOLF HOLE 14 VIEW

07 R



ENTRY LEVEL 01, 02, 03, 04

GOLF HOLE 13 VIEW



# ATELIER 1

Sellable Area	43.3	m <sup>2</sup>
Terrace Area	-	m <sup>2</sup>
Utility Area	-	m <sup>2</sup>
<b>Total Gross Area</b>	<b>43.3</b>	<b>m<sup>2</sup></b>

## Unit Number

B-GL-A1 R

B-GL-A3

### DISCLAIMER:

- All room dimensions are measured to structural elements and exclude wall finishes and construction tolerances.
- All dimensions have been provided by our consultant architects.
- All materials, dimensions and drawings are approximate, information subject to change without notice.
- Actual apartment area may vary from stated area. drawings not to scale. the developer reserves the right to make revisions.
- Any colored images shown are indicative only, actual colors may vary depending on the scanning and printing methods.
- Floor plans may be mirrored depending on location on master plan.
- In the case of garden level option, stair and terrace details may vary.
- R refers to mirrored units.



LANDSCAPE  
VIEW

GOLF HOLE 14 VIEW

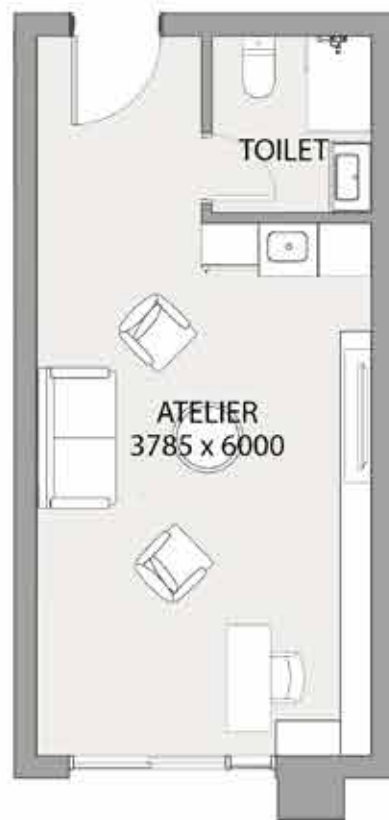


A1 R

A3

GARDEN LEVEL

GOLF HOLE 13 VIEW



## ATELIER 2

Sellable Area	30.75	m <sup>2</sup>
Terrace Area	-	m <sup>2</sup>
Utility Area	-	m <sup>2</sup>
<b>Total Gross Area</b>	<b>30.75</b>	<b>m<sup>2</sup></b>

### Unit Number

B-GL-A2 R

B-GL-A4

### DISCLAIMER:

- All room dimensions are measured to structural elements and exclude wall finishes and construction tolerances.
- All dimensions have been provided by our consultant architects.
- All materials, dimensions and drawings are approximate, information subject to change without notice.
- Actual apartment area may vary from stated area. drawings not to scale. the developer reserves the right to make revisions.
- Any colored images shown are indicative only, actual colors may vary depending on the scanning and printing methods.
- Floor plans may be mirrored depending on location on master plan.
- In the case of garden level option, stair and terrace details may vary.
- R refers to mirrored units.

LANDSCAPE  
VIEW

GOLF HOLE 14 VIEW

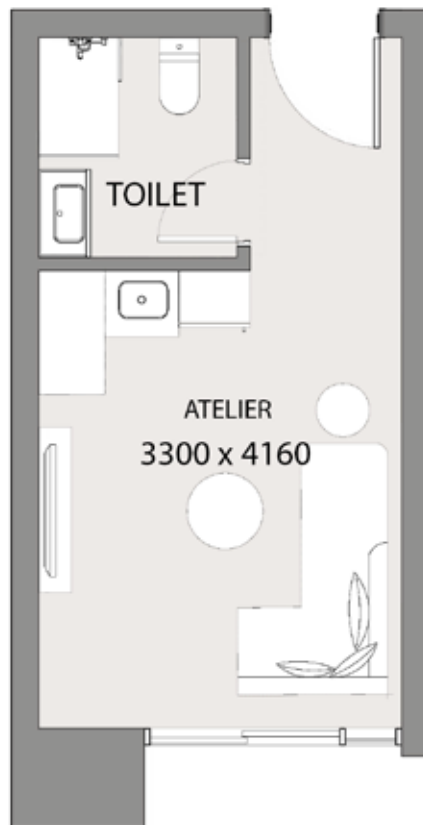


A2 R

A4

GARDEN LEVEL

GOLF HOLE 13 VIEW





# Uptown Cairo Specifications & Facilities

---

## Golf Residences- Standard Scheme

### ENTRY FOYER

---

Floors	Engineered wood flooring
Walls	Paint [Off-white]
Ceiling	Paint [white]

### UTILITY ROOMS & SERVICE BATHROOMS (IF ANY)

---

Floors	Local ceramic tiles
Walls	Paint [off-white] full height local ceramic tiles for bathrooms
Ceiling	Paint [white]

### BEDROOMS

---

Floors	HDF flooring
Walls	Paint [Off-white]
Ceiling	Paint [white]

### ALUMINUM & GLAZING:

---

Aluminum works	Powder coated aluminum frames
Glass	Single glazing

### AIR CONDITIONING UNITS

---

Bedrooms	Split unit
Reception	Concealed

### APPLIANCES & PANTRY (IF ANY):

---

Not included

### EXTERNAL SHUTTERS:

---

Not included

## LIVING, DINING & INTERNAL CORRIDORS:

---

Floors	Engineered wood flooring
Walls	Paint (Off-white)
Ceiling	Paint (white)

## ALL BATHROOMS:

---

Floors	High quality local porcelain tiles
Walls	High quality local ceramic porcelain tiles with paint
Ceiling	Paint (white)

## KITCHEN

---

Floors	High quality local porcelain tiles
Walls	Paint (Off-white)
Ceiling	Paint (white)

## OPTIONAL KITCHEN CABINETS (SPECIAL OFFER)

---

Kitchen cabinets	Laminate veneered woodwork
Countertop	Engineered stone
Style	Modern contemporary

## DOORS:

---

Apartment	Stained woodwork
Internal Wall	Lacquered on MDF

## SANITARY WARE

---

Local Sanitary fixtures and chrome mixers

- All materials are tentative. Information is subject to change without notice depending on availability of specified materials. Equivalents will then be installed instead.
- Please refer to the sample board for all colour / style of finishes.
- Kitchens and wardrobes are not included.

## EMAAR SALES CENTERS

### Uptown Cairo

Emtidad Ramsis St. exit from the 6th  
of October bridge

### Capital Business Park

Ground floor B2 building, Sheikh  
Zayed, Giza

### Heliopolis

40, Thawra St.

### Mivida

Mivida Business Park, Building 1, end  
of road 90 next to AUC new campus

### Marassi

Social Hub, Sidi Abdel Rahman, Kilo  
133, North Coast Road, Matrouh

16116 | [WWW.UPTOWNCAIRO-EGYPT.COM](http://WWW.UPTOWNCAIRO-EGYPT.COM)



EMAAR  
MISR