

UPTOWN  
CAIRO  
HEART OF CAIRO

*The*

PEAK

*THE PEAK OF  
SOPHISTICATED*

# A MOUNTAIN MIRACLE

Uptown Cairo, an award-winning project located on an exotic hilltop 200m above sea level.

mipim  
AWARDS



# *BEAUTY ALL AROUND*

A haven of tranquility and peace of mind, with lush green spaces enveloping its homes, Uptown Cairo is the embodiment of refinement.





*THE CENTER  
OF IT ALL*

Located in the heart of the capital, Uptown Cairo has a one-of-a-kind location. Easily accessible from everywhere.

# *EXCEPTIONAL 18-HOLE GOLF COURSE*

Experience the golf-next-door lifestyle as you wake up surrounded by the vast greenery of Uptown Cairo's 18-hole golf course.



UPTOWN GOLF COURSE





# *WORLD-CLASS GOLF EXPERIENCE*

An exceptional course, meticulously designed to test your skills, offering a unique, world-class golf experience.

# THE GOLF CLUBHOUSE

A perfect spot for you and your family with outlets for dining, sports, wellness, and beauty. Offering a heartwarming view and a mesmerizing skyline against the horizon, the award-winning clubhouse leaves no room for imperfections.





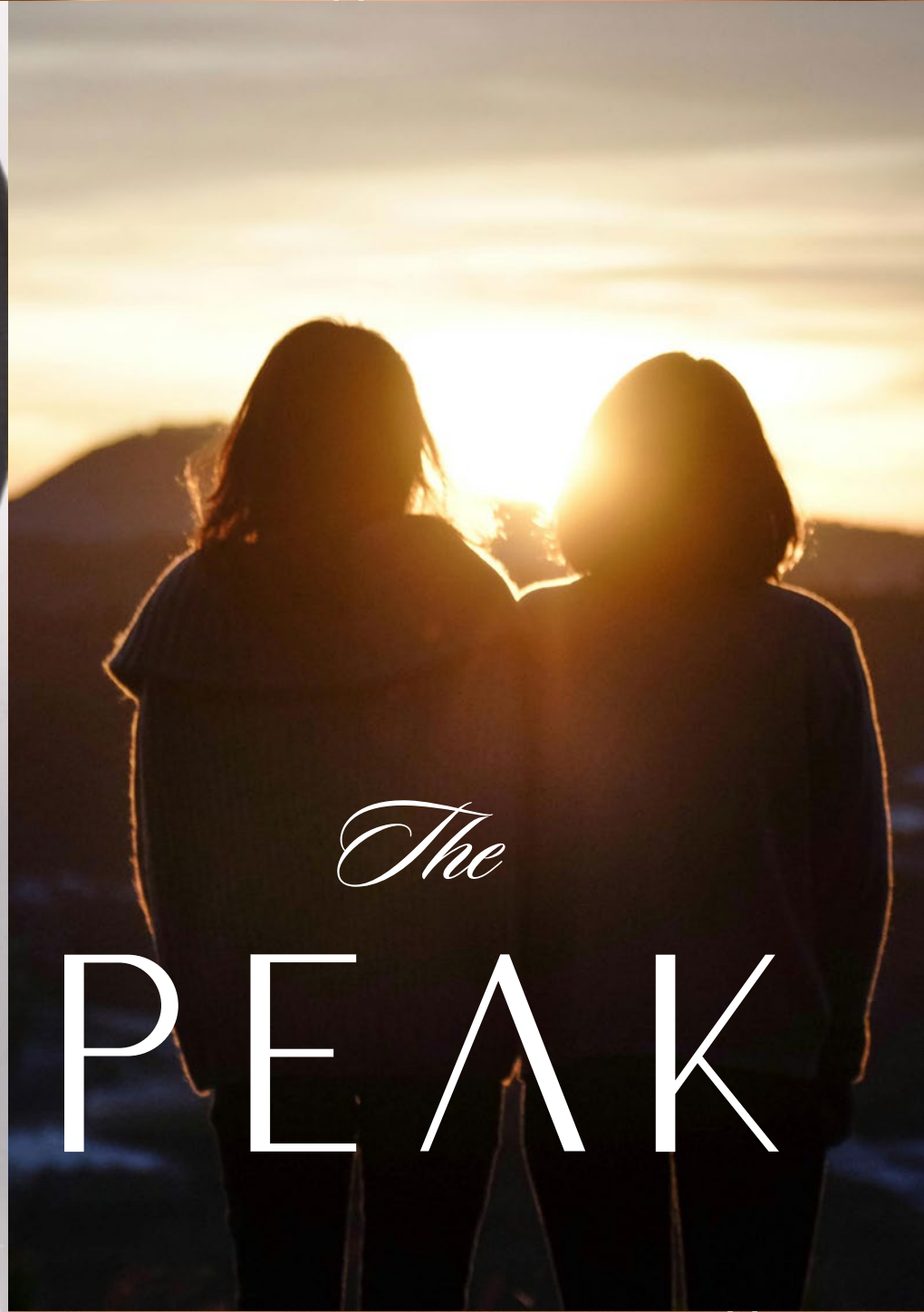


# ELITE EDUCATION

Experience educational excellence at the American International School in Egypt, Main Campus; where a diverse community empowers children to reach their full potential.

AIS will begin operations in 2025, offering exciting opportunities for students.





# *A SKY-HIGH LIFESTYLE*

Enjoy stunning city views and a refined lifestyle in this exclusive community, complete with lush greenery and unparalleled panoramas that has easy access to all Cairo's major districts.



*A VIEW OF  
CAIRO'S SKYLINE*







# *NEXTDOOR VIBRANT EXPERIENCES*

Experience unparalleled connectivity and relaxation at The Peak. Step out your door to access world-class amenities; such as, Uptown Club & KingsVille.





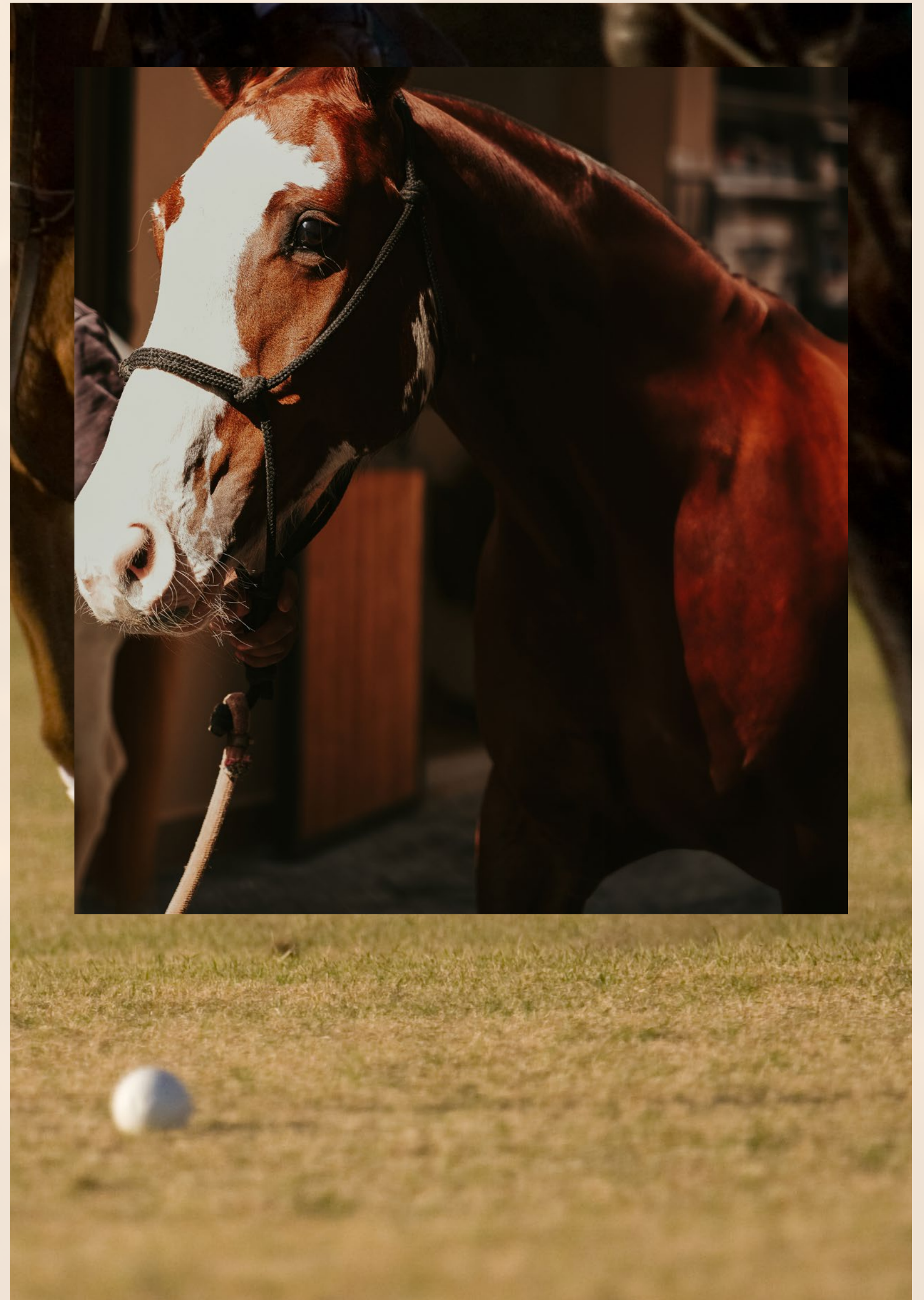
UPTOWN  
◆ CLUB ◆  
*EST. 2022*

**AN ELITE APPROACH TO SPORTS**

Designed for the finer tastes, Uptown Club adds a touch of sophistication into the sports and activities beloved by many. Its total land area of 62,000 sqm is dedicated to a diverse range of athletic and artistic activities, such as tennis, gymnastics, football, and music.

# KINGSVILLE

Live next to the kings. Exclusively Horse ville and Kings polo unite to showcase “Kingsville” to the world, a place where you can discover your equestrian passion from horseback riding to a full spectrum of activities including show jumping, dressage, and horse polo for a vibrant experience steps away from your home.





# STEPS AWAY FROM UPTOWN CLUB



*WELCOME TO  
YOUR DREAM  
HOME*





*EXCLUSIVE  
MOMENTS*

# *EXQUISITE INTERIORS*

Discover perfection in every detail at The Peak. Each residence is meticulously crafted, to seamlessly blend sophistication and comfort.

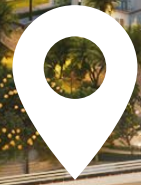


# *CRAFTED DESIGNS*

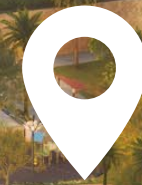


*THE PEAK OF  
LUXURY*





KINGS  
VILLE



UPTOWN  
CLUB  
EST. 2022

*The*  
PEAK

# THE PEAK'S SPECIAL FEATURES



## CITY VIEWS

Uninterrupted cityscapes to frame your everyday life



## OPEN GREEN SPACES

Breathe in the fresh air & enjoy the beauty of nature from the comfort of your home



## PROXIMITY

The peak is in proximity with



## SIX LEVELED PLATEAUS

Privacy for each villa Terrace and Garden plateaus



## TIMELESS ARCHITECTURAL STYLE



## FULLY-FINISHED HOMES

Crafted for glamorous living





# SITE PLAN

## *The* PEAK

Disclaimer:

All materials and drawings are approximate and not to scale.

The developer reserves the right to make revisions without prior notice and only for illustrative purposes.



# VILLA - 02 - F1

TOTAL GROSS AREA 501 sqm





# VILLA - 02 - F1

5 BEDROOMS + FAMILY LIVING

	SQM
PORCH AREA	9
GROUND FLOOR AREA	218
FIRST FLOOR AREA	185
UNCOVERED TERRACE AREA	54
COVERED GARAGE AREA	35
<b>TOTAL GROSS AREA</b>	<b>501</b>

MASTER BEDROOM	1
ENSUITE BEDROOMS	2
BEDROOMS	2
FAMILY LIVING	1
BATHROOMS	4
POWDER ROOM	1
MAID'S ROOM	1
DRIVER'S ROOM	1



GROUND FLOOR LEVEL



FIRST FLOOR LEVEL

**DISCLAIMER:**

1. All room dimensions are measured to structural elements and exclude wall finishes and construction tolerances.
2. All materials, dimensions and drawings are approximate, information subject to change without notice.
3. Actual areas may vary from the stated area. Drawings not to scale. The developer reserves the right to make revisions without prior notice.
4. Actual unit areas, front windows, porches, terraces, loggia and exterior trim detail may vary by elevation styles and floor level.
5. Each garden plot and area are subject to change based on the location of the building and the final design, land areas are not planted.
6. All villa visuals and layout context is for illustrative purposes and may be subject to change without prior notice.
7. Actual unit orientation (original or mirrored) is according to the contract annex. Brochure encloses only the original orientation.

# VILLA - 02 - F2

TOTAL GROSS AREA 511 SQM





# VILLA - 02 - F2

5 BEDROOMS + FAMILY LIVING

	SQM
PORCH AREA	19
GROUND FLOOR AREA	218
FIRST FLOOR AREA	184
UNCOVERED TERRACE AREA	55
COVERED GARAGE AREA	35
<b>TOTAL GROSS AREA</b>	<b>511</b>

MASTER BEDROOM	1
ENSUITE BEDROOMS	2
BEDROOMS	2
FAMILY LIVING	1
BATHROOMS	4
POWDER ROOM	1
MAID'S ROOM	1
DRIVER'S ROOM	1



GROUND FLOOR  
LEVEL



FIRST FLOOR  
LEVEL

DISCLAIMER:  
 1. All room dimensions are measured to structural elements and exclude wall finishes and construction tolerances.  
 2. All materials, dimensions and drawings are approximate, information subject to change without notice.  
 3. Actual areas may vary from the stated area. Drawings not to scale. The developer reserves the right to make revisions without prior notice.  
 4. Actual unit areas, front windows, porches, terraces, loggia and exterior trim detail may vary by elevation styles and floor level.  
 5. Each garden plot and area are subject to change based on the location of the building and the final design, land areas are not planted.  
 6. All villa visuals and layout context is for illustrative purposes and may be subject to change without prior notice.  
 7. Actual unit orientation (original or mirrored) is according to the contract annex. Brochure encloses only the original orientation.

# VILLA - 18B - F1

TOTAL GROSS AREA 484 sqm







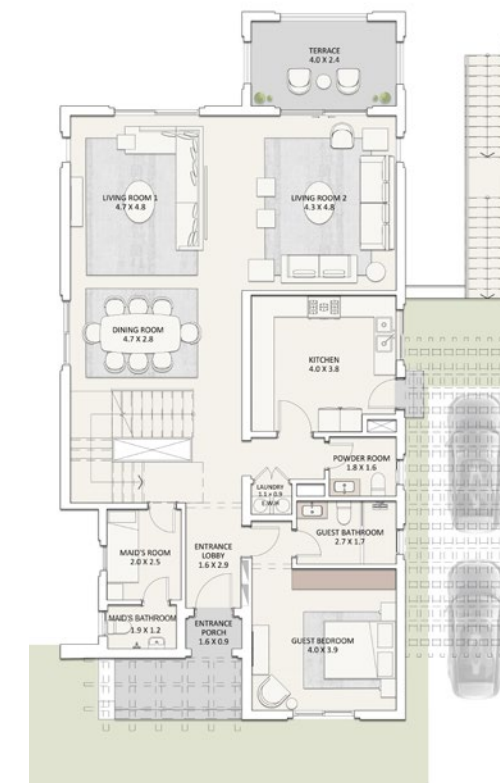
# VILLA - 18B - F1

5 BEDROOMS

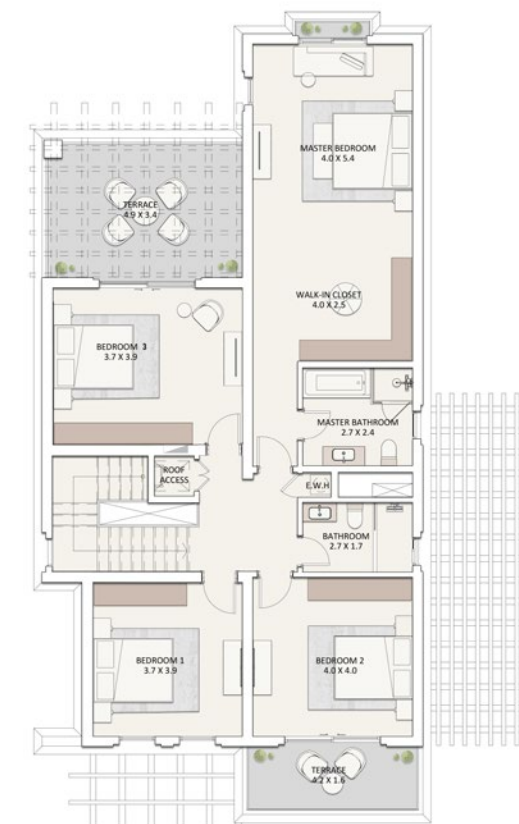
	SQM
PORCH AREA	9
GROUND FLOOR AREA	145
FIRST FLOOR AREA	133
BASEMENT FLOOR AREA	149
COVERED TERRACE AREA	23
UNCOVERED TERRACE AREA	25
<b>TOTAL GROSS AREA</b>	<b>484</b>
MASTER BEDROOMS	1
ENSUITE BEDROOMS	1
BEDROOMS	3
BATHROOMS	3
POWDER ROOM	1
MAID'S ROOM	1



BASEMENT FLOOR LEVEL



GROUND FLOOR LEVEL



FIRST FLOOR LEVEL

DISCLAIMER:  
 1. All room dimensions are measured to structural elements and exclude wall finishes and construction tolerances.  
 2. All materials, dimensions and drawings are approximate, information subject to change without notice.  
 3. Actual areas may vary from the stated area. Drawings not to scale. The developer reserves the right to make revisions without prior notice.  
 4. Actual unit areas, front windows, porches, terraces, loggia and exterior trim detail may vary by elevation styles and floor level.  
 5. Each garden plot and area are subject to change based on the location of the building and the final design, land areas are not planted.  
 6. All villa visuals and layout context is for illustrative purposes and may be subject to change without prior notice.  
 7. Actual unit orientation (original or mirrored) is according to the contract annex. Brochure encloses only the original orientation.

# VILLA - 18B - F2

TOTAL GROSS AREA 485 sqm

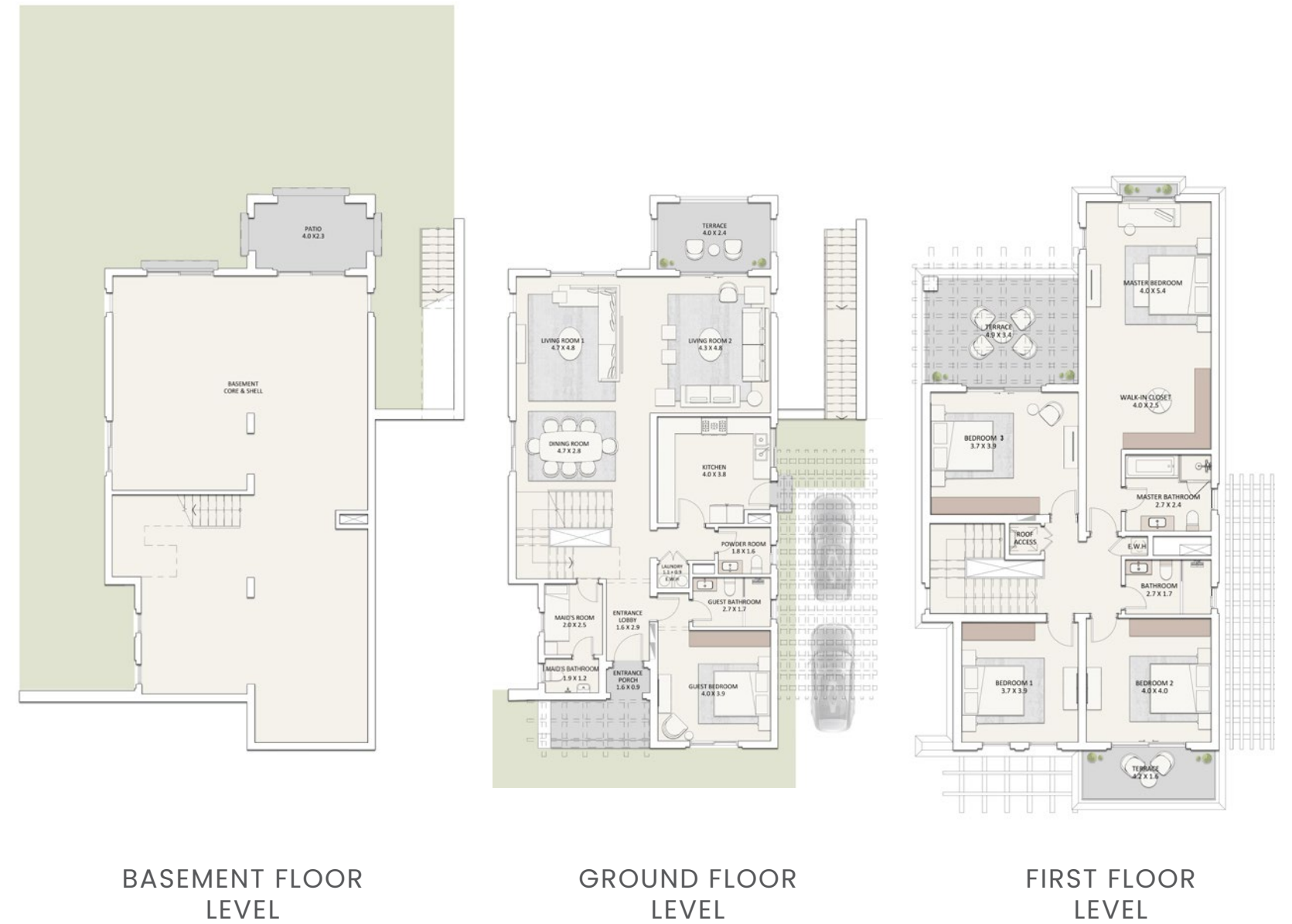




# VILLA - 18B - F2

5 BEDROOMS

	SQM
PORCH AREA	9
GROUND FLOOR AREA	145
FIRST FLOOR AREA	133
BASEMENT FLOOR AREA	149
COVERED TERRACE AREA	23
UNCOVERED TERRACE AREA	26
<b>TOTAL GROSS AREA</b>	<b>485</b>
MASTER BEDROOM	1
ENSUITE BEDROOM	1
BEDROOMS	3
BATHROOMS	3
POWDER ROOM	1
MAID'S ROOM	1



BASEMENT FLOOR LEVEL

GROUND FLOOR LEVEL

FIRST FLOOR LEVEL

DISCLAIMER:  
 1. All room dimensions are measured to structural elements and exclude wall finishes and construction tolerances.  
 2. All materials, dimensions and drawings are approximate, information subject to change without notice.  
 3. Actual areas may vary from the stated area. Drawings not to scale. The developer reserves the right to make revisions without prior notice.  
 4. Actual unit areas, front windows, porches, terraces, loggia and exterior trim detail may vary by elevation styles and floor level.  
 5. Each garden plot and area are subject to change based on the location of the building and the final design, land areas are not planted.  
 6. All villa visuals and layout context is for illustrative purposes and may be subject to change without prior notice.  
 7. Actual unit orientation (original or mirrored) is according to the contract annex. Brochure encloses only the original orientation.

# VILLA - 18P

TOTAL GROSS AREA 457 SQM

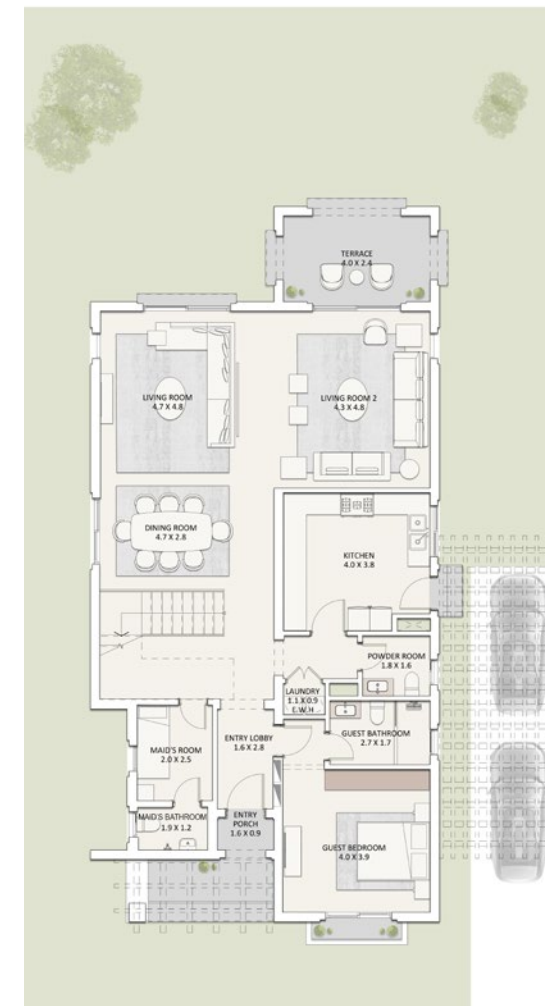




# VILLA - 18P

6 BEDROOMS + FAMILY LIVING

	SQM
PORCH AREA	8
GROUND FLOOR AREA	146
FIRST FLOOR AREA	133
PENTHOUSE AREA	66
COVERED TERRACE AREA	12
UNCOVERED TERRACE AREA	25
ROOF TERRACE AREA	67
<b>TOTAL GROSS AREA</b>	<b>457</b>
MASTER BEDROOM	1
ENSUITE BEDROOM	1
BEDROOMS	4
FAMILY LIVING	1
BATHROOMS	4
POWDER ROOM	1
MAID'S ROOM	1



GROUND FLOOR LEVEL



FIRST FLOOR LEVEL



PENTHOUSE FLOOR LEVEL

DISCLAIMER:  
 1. All room dimensions are measured to structural elements and exclude wall finishes and construction tolerances.  
 2. All materials, dimensions and drawings are approximate, information subject to change without notice.  
 3. Actual areas may vary from the stated area. Drawings not to scale. The developer reserves the right to make revisions without prior notice.  
 4. Actual unit areas, front windows, porches, terraces, loggia and exterior trim detail may vary by elevation styles and floor level.  
 5. Each garden plot and area are subject to change based on the location of the building and the final design, land areas are not planted.  
 6. All villa visuals and layout context is for illustrative purposes and may be subject to change without prior notice.  
 7. Actual unit orientation (original or mirrored) is according to the contract annex. Brochure encloses only the original orientation.



# VILLA - 16P

TOTAL GROSS AREA 354 sqm





# VILLA - 16P

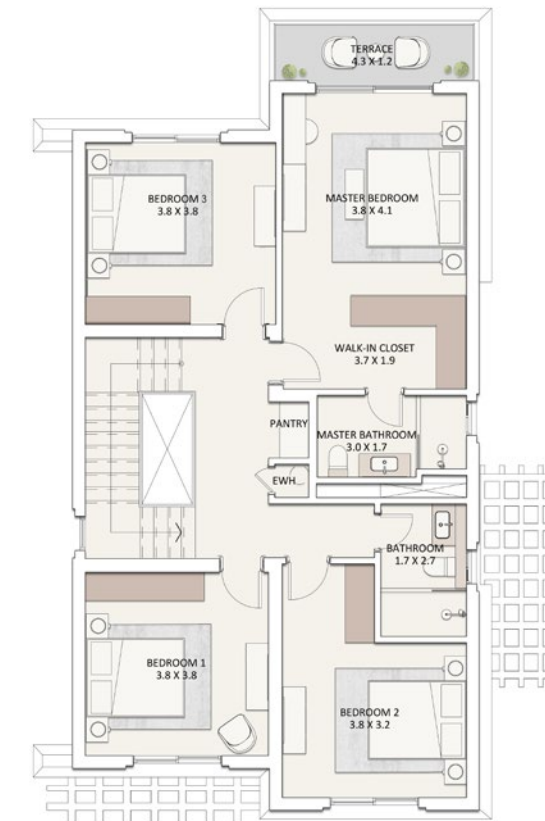
4 BEDROOMS + FAMILY LIVING

	SQM
PORCH AREA	6
GROUND FLOOR AREA	109
FIRST FLOOR AREA	112
PENTHOUSE AREA	44
COVERED TERRACE AREA	10
UNCOVERED TERRACE AREA	5
ROOF TERRACE AREA	68
<b>TOTAL GROSS AREA</b>	<b>354</b>

MASTER BEDROOM	1
BEDROOMS	3
FAMILY LIVING	1
BATHROOMS	3
POWDER ROOM	1
MAID'S ROOM	1



GROUND FLOOR LEVEL



FIRST FLOOR LEVEL



PENTHOUSE FLOOR LEVEL

DISCLAIMER:  
 1. All room dimensions are measured to structural elements and exclude wall finishes and construction tolerances.  
 2. All materials, dimensions and drawings are approximate, information subject to change without notice.  
 3. Actual areas may vary from the stated area. Drawings not to scale. The developer reserves the right to make revisions without prior notice.  
 4. Actual unit areas, front windows, porches, terraces, loggia and exterior trim detail may vary by elevation styles and floor level.  
 5. Each garden plot and area are subject to change based on the location of the building and the final design, land areas are not planted.  
 6. All villa visuals and layout context is for illustrative purposes and may be subject to change without prior notice.  
 7. Actual unit orientation (original or mirrored) is according to the contract annex. Brochure encloses only the original orientation.

# VILLA - 16

TOTAL GROSS AREA 244 SQM





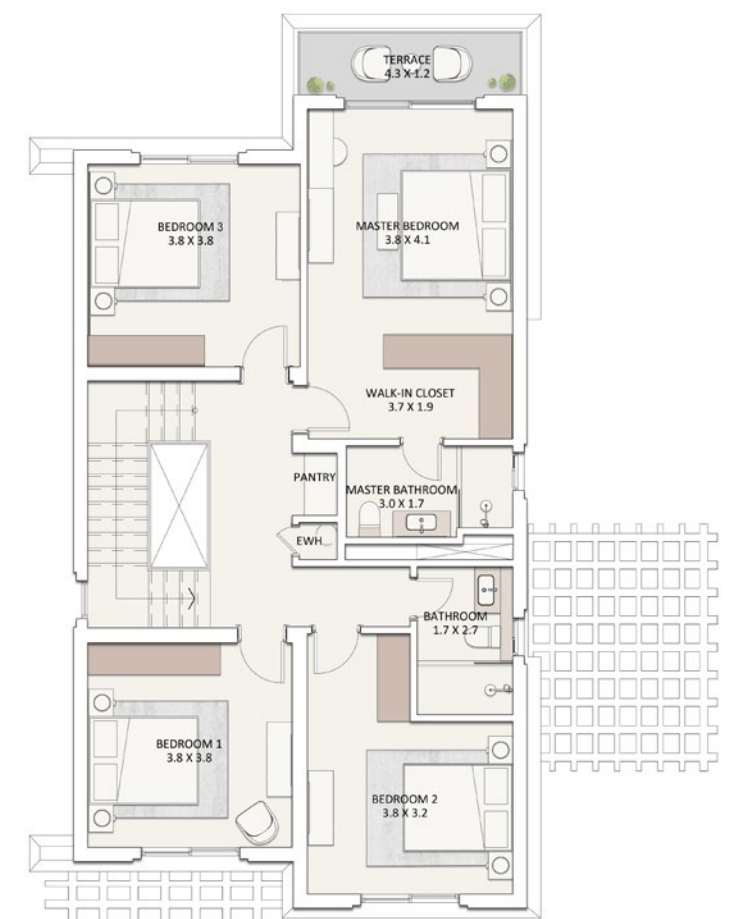
# VILLA - 16

4 BEDROOMS

	SQM
PORCH AREA	7
GROUND FLOOR AREA	109
FIRST FLOOR AREA	113
COVERED TERRACE AREA	10
UNCOVERED TERRACE AREA	5
<b>TOTAL GROSS AREA</b>	<b>244</b>
MASTER BEDROOM	1
BEDROOMS	3
BATHROOMS	2
POWDER ROOM	1
MAID'S ROOM	1



GROUND FLOOR LEVEL



FIRST FLOOR LEVEL

DISCLAIMER:  
 1. All room dimensions are measured to structural elements and exclude wall finishes and construction tolerances.  
 2. All materials, dimensions and drawings are approximate, information subject to change without notice.  
 3. Actual areas may vary from the stated area. Drawings not to scale. The developer reserves the right to make revisions without prior notice.  
 4. Actual unit areas, front windows, porches, terraces, loggia and exterior trim detail may vary by elevation styles and floor level.  
 5. Each garden plot and area are subject to change based on the location of the building and the final design, land areas are not planted.  
 6. All villa visuals and layout context is for illustrative purposes and may be subject to change without prior notice.  
 7. Actual unit orientation (original or mirrored) is according to the contract annex. Brochure encloses only the original orientation.

# VILLA - 06

TOTAL GROSS AREA 225 SQM







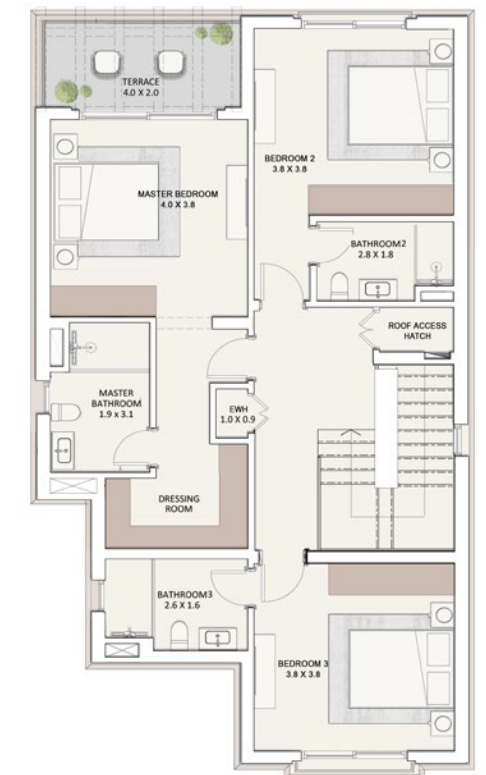
# VILLA - 06

3 BEDROOMS

	SQM
PORCH AREA	9
GROUND FLOOR AREA	96
FIRST FLOOR AREA	104
COVERED TERRACE AREA	7
UNCOVERED TERRACE AREA	9
<b>TOTAL GROSS AREA</b>	<b>225</b>
MASTER BEDROOM	1
ENSUITE BEDROOMS	2
POWDER ROOM	1
BATHROOMS	3
MAID'S ROOM	1



GROUND FLOOR LEVEL



FIRST FLOOR LEVEL

DISCLAIMER:  
 1. All room dimensions are measured to structural elements and exclude wall finishes and construction tolerances.  
 2. All materials, dimensions and drawings are approximate, information subject to change without notice.  
 3. Actual areas may vary from the stated area. Drawings not to scale. The developer reserves the right to make revisions without prior notice.  
 4. Actual unit areas, front windows, porches, terraces, loggia and exterior trim detail may vary by elevation styles and floor level.  
 5. Each garden plot and area are subject to change based on the location of the building and the final design, land areas are not planted.  
 6. All villa visuals and layout context is for illustrative purposes and may be subject to change without prior notice.  
 7. Actual unit orientation (original or mirrored) is according to the contract annex. Brochure encloses only the original orientation.

# TOWNHOME - F1

CORNER UNIT TOTAL GROSS AREA 220 SQM

MIDDLE UNIT TOTAL GROSS AREA 309 SQM

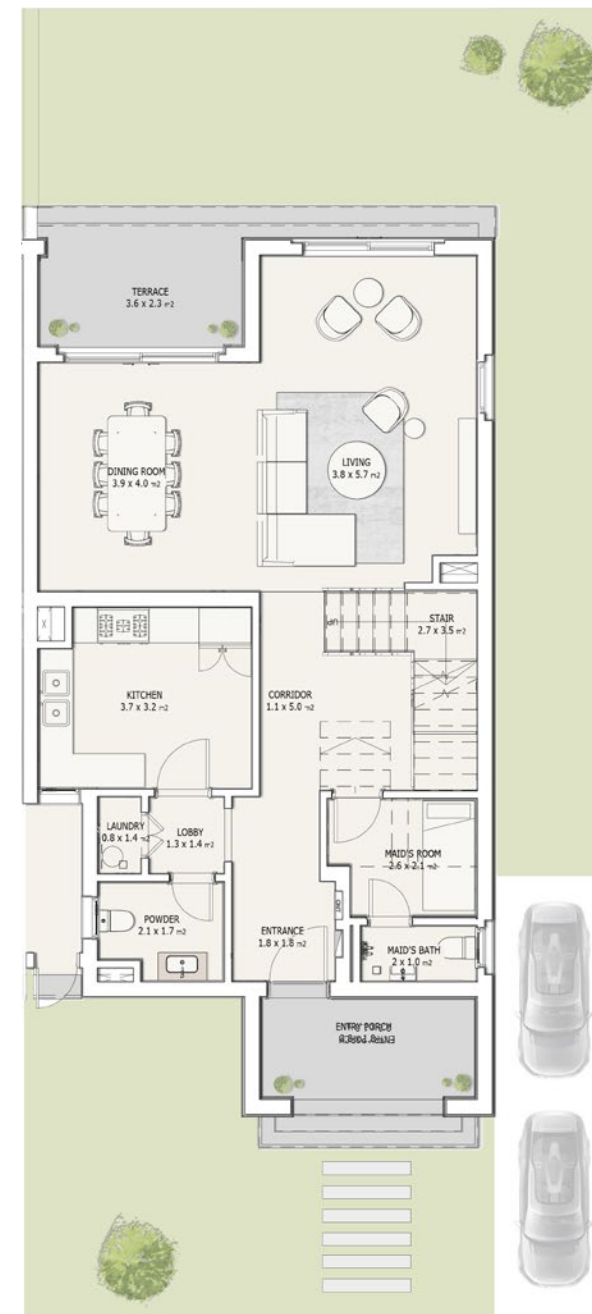




# TOWNHOME - F1

## CORNER UNIT - 3 BEDROOMS

	SQM
PORCH AREA	8
GROUND FLOOR AREA	95
FIRST FLOOR AREA	103
COVERED TERRACE AREA	7
UNCOVERED TERRACE AREA	7
<b>TOTAL GROSS AREA</b>	<b>220</b>
MASTER BEDROOM	1
ENSUITE BEDROOMS	2
POWDER ROOM	1
BATHROOMS	3
MAID'S ROOM	1

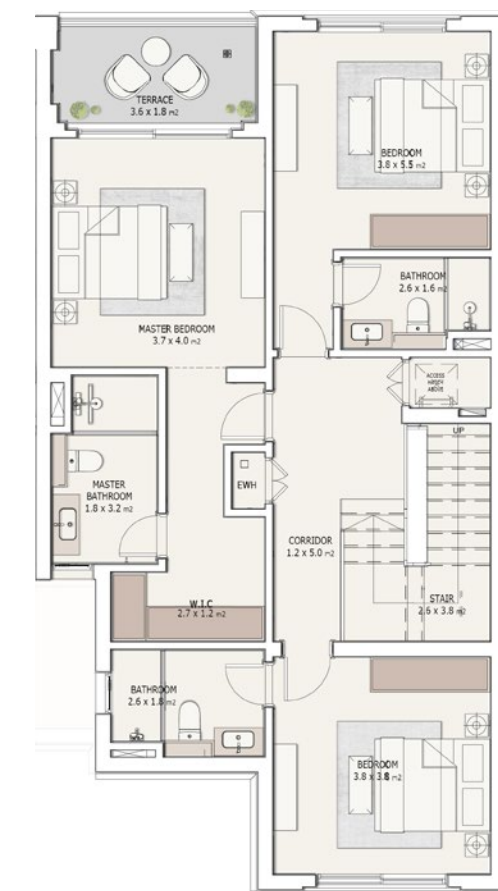


GROUND FLOOR LEVEL

### KEY PLAN CORNER UNITS



\*THIS UNIT IS THE MIRROR OF THE BELOW PLAN



FIRST FLOOR LEVEL

#### DISCLAIMER:

1. All room dimensions are measured to structural elements and exclude wall finishes and construction tolerances.
2. All materials, dimensions and drawings are approximate, information subject to change without notice.
3. Actual areas may vary from the stated area. Drawings not to scale. The developer reserves the right to make revisions without prior notice.
4. Actual unit areas, front windows, porches, terraces, loggia and exterior trim detail may vary by elevation styles and floor level.
5. Each garden plot and area are subject to change based on the location of the building and the final design, land areas are not planted.
6. All villa visuals and layout context is for illustrative purposes and may be subject to change without prior notice.
7. Actual unit orientation (original or mirrored) is according to the contract annex. Brochure encloses only the original orientation.

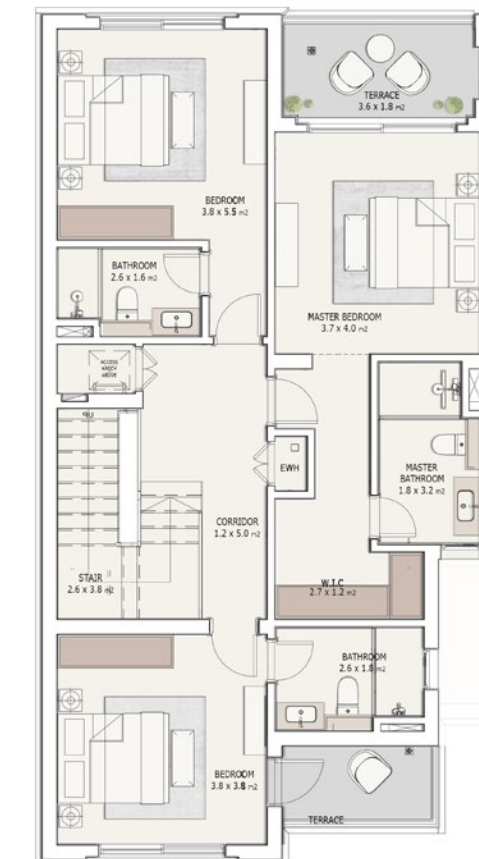
# TOWNHOME - F1

## MIDDLE UNIT - 4 BEDROOMS

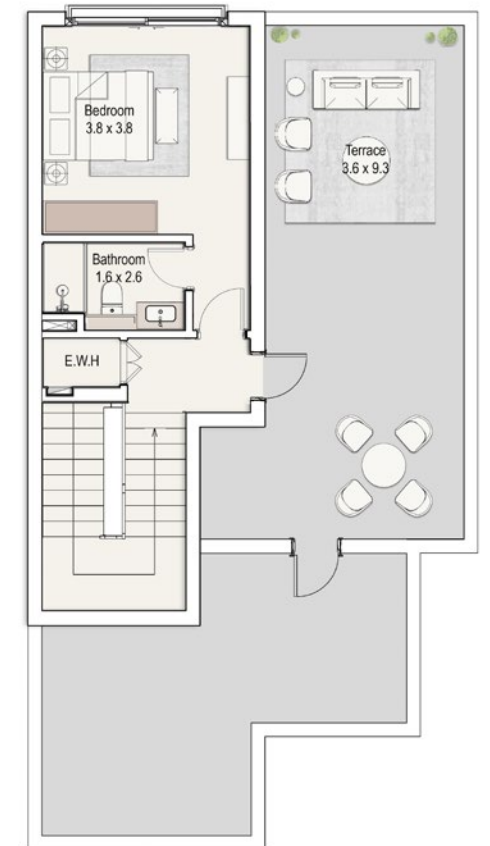
	SQM
PORCH AREA	9
GROUND FLOOR AREA	93
FIRST FLOOR AREA	101
PENTHOUSE AREA	42
COVERED TERRACE AREA	12
UNCOVERED TERRACE AREA	12
ROOF TERRACE AREA	40
<b>TOTAL GROSS AREA</b>	<b>309</b>
MASTER BEDROOM	1
ENSUITE BEDROOMS	3
BATHROOMS	4
POWDER ROOM	1
MAID'S ROOM	1



GROUND FLOOR LEVEL



FIRST FLOOR LEVEL



PENTHOUSE FLOOR LEVEL

### KEY PLAN MIDDLE UNITS



\*THIS UNIT IS THE MIRROR OF THE BELOW PLAN

- DISCLAIMER:
1. All room dimensions are measured to structural elements and exclude wall finishes and construction tolerances.
  2. All materials, dimensions and drawings are approximate, information subject to change without notice.
  3. Actual areas may vary from the stated area. Drawings not to scale. The developer reserves the right to make revisions without prior notice.
  4. Actual unit areas, front windows, porches, terraces, loggia and exterior trim detail may vary by elevation styles and floor level.
  5. Each garden plot and area are subject to change based on the location of the building and the final design, land areas are not planted.
  6. All villa visuals and layout context is for illustrative purposes and may be subject to change without prior notice.
  7. Actual unit orientation (original or mirrored) is according to the contract annex. Brochure encloses only the original orientation.

# TOWNHOME - F2

CORNER UNIT TOTAL GROSS AREA 220 SQM

MIDDLE UNIT TOTAL GROSS AREA 299 SQM

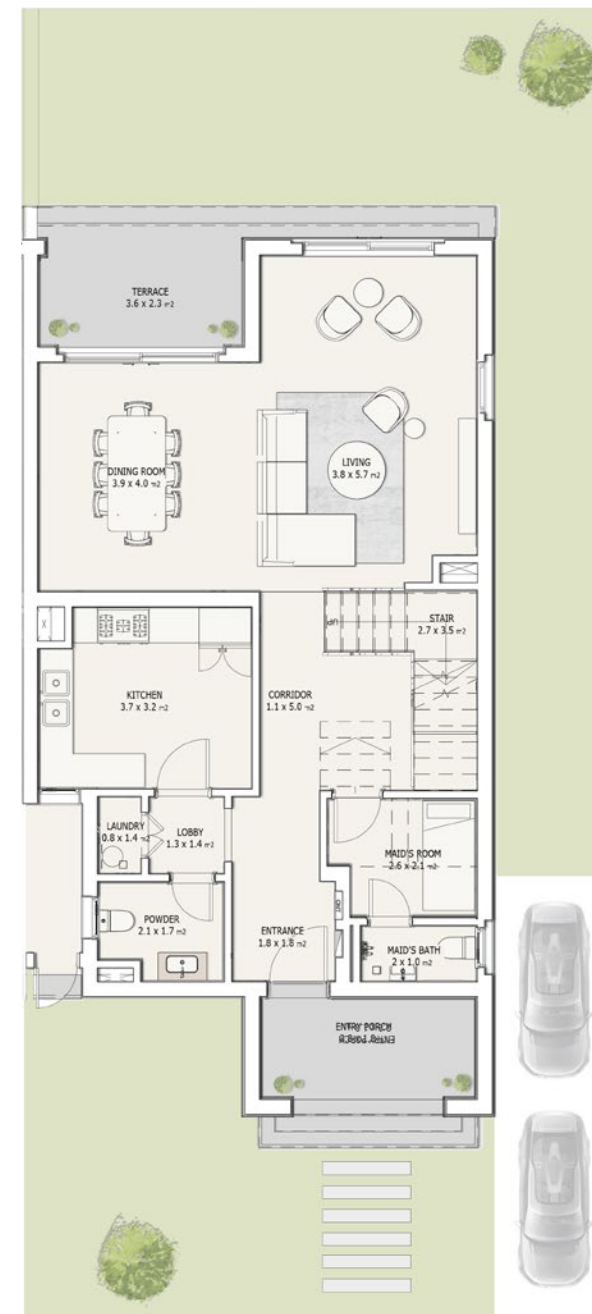




# TOWNHOME - F2

## CORNER UNIT - 3 BEDROOMS

	SQM
PORCH AREA	8
GROUND FLOOR AREA	95
FIRST FLOOR AREA	103
COVERED TERRACE AREA	7
UNCOVERED TERRACE AREA	7
<b>TOTAL GROSS AREA</b>	<b>220</b>
MASTER BEDROOM	1
ENSUITE BEDROOMS	2
POWDER ROOM	1
BATHROOMS	3
MAID'S ROOM	1

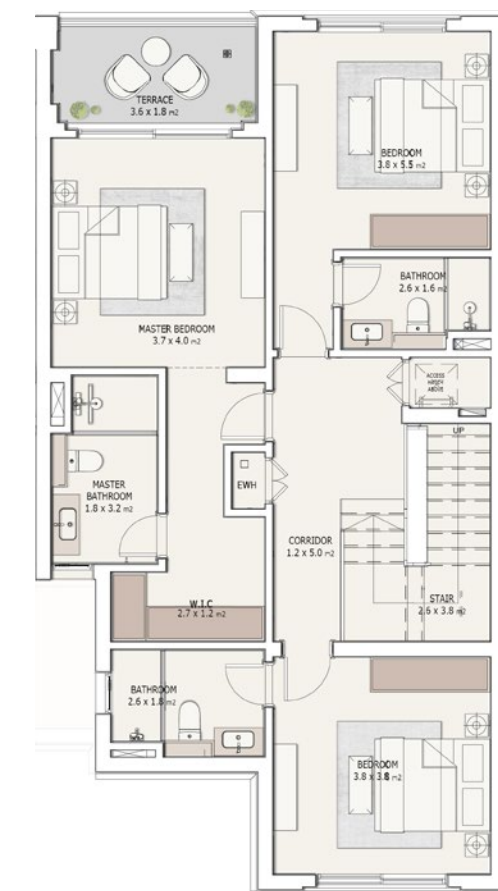


GROUND FLOOR LEVEL

### KEY PLAN CORNER UNITS



\*THIS UNIT IS THE MIRROR OF THE BELOW PLAN



FIRST FLOOR LEVEL

DISCLAIMER:  
 1. All room dimensions are measured to structural elements and exclude wall finishes and construction tolerances.  
 2. All materials, dimensions and drawings are approximate, information subject to change without notice.  
 3. Actual areas may vary from the stated area. Drawings not to scale. The developer reserves the right to make revisions without prior notice.  
 4. Actual unit areas, front windows, porches, terraces, loggia and exterior trim detail may vary by elevation styles and floor level.  
 5. Each garden plot and area are subject to change based on the location of the building and the final design, land areas are not planted.  
 6. All villa visuals and layout context is for illustrative purposes and may be subject to change without prior notice.  
 7. Actual unit orientation (original or mirrored) is according to the contract annex. Brochure encloses only the original orientation.



# TOWNHOME - F2

## MIDDLE UNIT - 4 BEDROOMS

	SQM
PORCH AREA	9
GROUND FLOOR AREA	93
FIRST FLOOR AREA	101
PENTHOUSE AREA	42
COVERED TERRACE AREA	7
UNCOVERED TERRACE AREA	7
ROOF TERRACE AREA	40
<b>TOTAL GROSS AREA</b>	<b>299</b>
MASTER BEDROOMS	1
ENSUITE BEDROOMS	3
POWDER ROOM	1
BATHROOMS	4
MAID'S ROOM	1

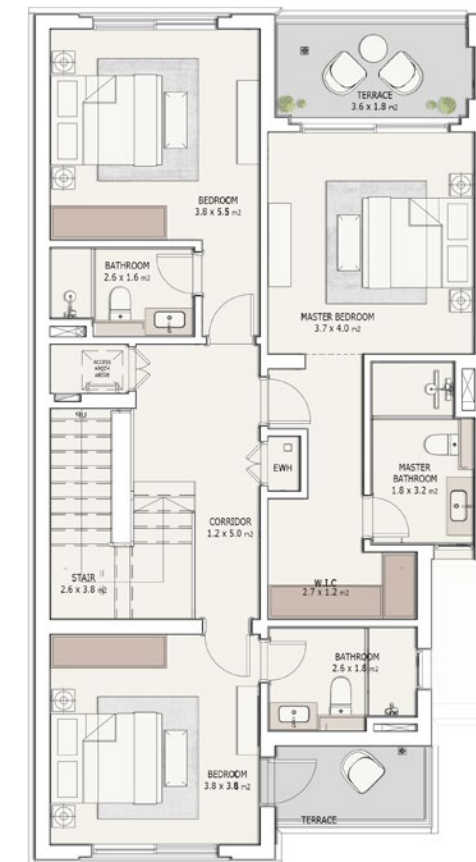
### KEY PLAN MIDDLE UNITS



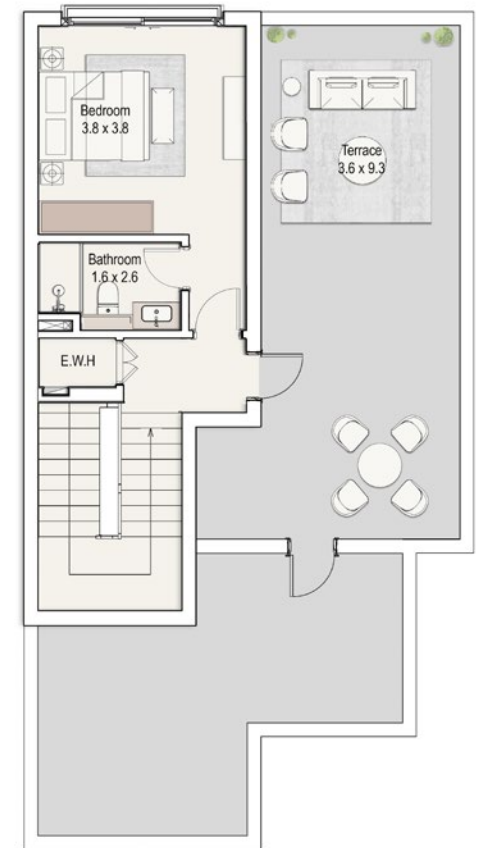
\*THIS UNIT IS THE MIRROR OF THE BELOW PLAN



GROUND FLOOR LEVEL



FIRST FLOOR LEVEL



PENTHOUSE FLOOR LEVEL

- DISCLAIMER:
1. All room dimensions are measured to structural elements and exclude wall finishes and construction tolerances.
  2. All materials, dimensions and drawings are approximate, information subject to change without notice.
  3. Actual areas may vary from the stated area. Drawings not to scale. The developer reserves the right to make revisions without prior notice.
  4. Actual unit areas, front windows, porches, terraces, loggia and exterior trim detail may vary by elevation styles and floor level.
  5. Each garden plot and area are subject to change based on the location of the building and the final design, land areas are not planted.
  6. All villa visuals and layout context is for illustrative purposes and may be subject to change without prior notice.
  7. Actual unit orientation (original or mirrored) is according to the contract annex. Brochure encloses only the original orientation.

# SPECIFICATIONS & FACILITIES

## VILLAS & TOWNHOMES

### 1. LIVING & DINING AREA

- Floors Engineered Wood
- Walls Paint (white)
- Ceiling Paint (white)

### 2. KITCHEN

- Floors Porcelain
- Walls Paint (white)
- Ceiling Paint (white)

### 3. DOORS

- Entrance Solid Wood
- Internal Doors Lacquered Wood

### 4. ENTRANCE, STAIRCASE & INTERNAL CORRIDOR

- Floors Marble
- Walls Paint (white)
- Ceiling Paint (white)

### 5. BEDROOMS

- Floors HDF Flooring
- Walls Paint (white)
- Ceiling Paint (white)

### 6. POWDER ROOM & BATHROOMS

- Floors Porcelain
- Walls Porcelain with Paint
- Ceiling Paint (white)

### 7. SAINTARY WARE

- Local sanitary fixtures & chrome mixers

### 8. KITCHEN CABINETS / KITCHENETTE

- Not Included - Provision only

### 9. TERRACES

- Floors Porcelain
- Walls Paint (white)
- Ceiling Paint (white)

### 10. UTILITY ROOMS

- Floors Local Ceramic Tiles
- Walls Local ceramic tiles and paint
- Ceiling Paint (white)

### 11. AIR CONDITIONING UNITS

- Not Included - Provision only

### 12. Water Heaters

- Not Included - Provision only

### 13. APPLIANCES & PANTRY (IF ANY)

- Not Included - Provision only

### 14. EXTERNAL SHUTTERS

- Not Included

### 15. WIC & WARDROBES

- Not Included

### 16. BASEMENT (INCLUDING STAIRS) - IF AVAILABLE

- Core & Shell

All materials are tentative. Information is subject to change without notice depending on availability of the specified materials. Equivalents will then be installed instead.

- Kitchens, pantries and wardrobes are not included
- Instant water heaters are not allowed, provisions are for conventional water heaters. The design is based on conventional EWH type with an electrical load of max 2 KW.
- Air conditions are not included. Provisions are for split type.
- Gardens are delivered without plantation and irrigation.

EMAAR  
MISR