



ELIE SAAB

Elie Saab founded his eponymous label in 1982, at just 18 years old. Since then, the ELIE SAAB house has been established as one of the major leaders in the HAUTE COUTURE category globally, with ateliers based in Paris and Beirut. ELIE SAAB has continued to build on the inherent savoir-faire and innate elegance for which it is renowned, expanding into the Ready-to-Wear, Bridal, Accessories, Eyewear & Fragrance categories. Along with the brand's venture into home & interiors, with the MAISON line, ELIE SAAB joins the premiere league of the world's global luxury fashion & lifestyle brands.





ABOUT ELIE SAAB MAISON

The ELIE SAAB Maison collection is entirely manufactured in Italy, produced and distributed by Corporate Brand Maison SA. A collection that perfectly blends together all essential elements of the project: the uniqueness of the ELIE SAAB Brand style, the research in design, and the artisan excellence of Made in Italy. Carlo Colombo, one of the most important Italian architects and designers, has translated the vision of Mr. Saab into the first furniture collection.



MARKING AN EXCEPTIONAL COLLABORATION

A match made in the meticulously master planned haven; Cairo Gate, presenting an exclusive collection of elegantly designed ELIE SAAB Signature Villas. Offering an exquisite lifestyle, unlike anywhere seen before, evoking an impeccable sense of quality, splendor and sophistication, creating an experience as unique as your signature.



FASHION
STATEMENT
IN EVERY
DETAIL



ELIE SAAB

SIGNATURE VILLAS

CAIRO *gate*

This exceptional neighborhood comprises lavish and spacious villas, featuring a limited-edition one-story villa type, marking the global fashion icon's first-ever interior-design concept in Egypt. ELIE SAAB Signature Villas are surrounded by breathtaking views of luscious green valleys and beautiful lily ponds featuring a yoga pavilion as well as direct access to Rays Social Club.







ENDURING ELEGANCE



The refined and tailored homes are curated in every single detail, with the goal of transmitting, at first glance, an immersive sensation of modern grandeur and spectacular elegance. Promising a living experience unlike any other, every aspect of the ELIE SAAB Signature Villas has been studied to create beauty.





AN UNMATCHED LIVING EXPERIENCE

ELIE SAAB Signature Villas are surrounded by sweeping scenic views of luscious green valleys and beautiful lily ponds with comfortable seating zones and a yoga pavilion for a serene and relaxing experience. As well as pedestrian connectivity to Rays Social Club featuring premium amenities and facilities. An unmatched living experience is created combining breathtaking views and flawlessly crafted homes.



ELIE SAAB INTERIORS



BEAUTIFUL LILY PONDS



ELIE SAAB MAISON FURNITURE COLLECTION AVAILABLE



YOGA PAVILION



DIRECT ACCESS TO RAYS SOCIAL CLUB



SCENIC VIEWS OF LUSH GREEN VALLEYS



A UNIQUE
TOUCH
IN EVERY
ROOM



TIMELESS ELEGANCE
INTRICATE
DETAILS

A special attention has been given to the finishes delivering an exceptional level of quality, aesthetic and tactile performance, in pure ELIE SAAB style. An authentic sense of effortless and timeless elegance comes to life in exquisite living spaces to relax and unwind in style.





DISTINCTIVE DESIGNS

INTERIORS BY ELIE SAAB

An architectural and lifestyle expression that translates ELIE SAAB style of living, a distinctive style combining contemporary with timeless beauty. The dominant colors of the ELIE SAAB Signature Villa's interiors are those of the Brand's Haute Couture creations: delicate creams, pastel shades of grey contrasted with the shiny finish of metals, bronzes, marbles and noble stones.









LUXURY LIVING WITH ELIE SAAB MAISON

Exclusively for ELIE SAAB Signature Villas' homeowners, a collection of elegant furniture pieces from ELIE SAAB Maison can be purchased to create a wholesome designer living experience. Adding a touch of Art Deco to every corner in your home. ELIE SAAB Maison furniture is a timeless classic able to distinguish itself through exclusive details and exquisite craftsmanship of its futuristic lines.



RAYS SOCIAL CLUB

RAYS OF ENJOYMENT



YOGA PAVILION

SERENE LIFESTYLE



INDULGE IN
A WORLD OF
ELEGANCE



ABOUT CAIRO GATE

BOUTIQUE LIFESTYLE LIVING

Cairo Gate is crafted to offer the perfect mix between boutique and elegant living surrounded by breathtaking scenery at the most premium location in Sheikh Zayed. Indulge in the world's finest experiences as you stroll through the walkways of Cairo Gate, discovering countless premium services including world class retail, hospitality and entertainment experiences surrounding the beautifully designed contemporary homes.



LUXURIOUS
HOTEL



TOWNSQUARE
COMMERCIAL HUB



A ONE OF
A KIND SERVICED
RESIDENCES



TOWNSQUARE
BOUTIQUE
OFFICES



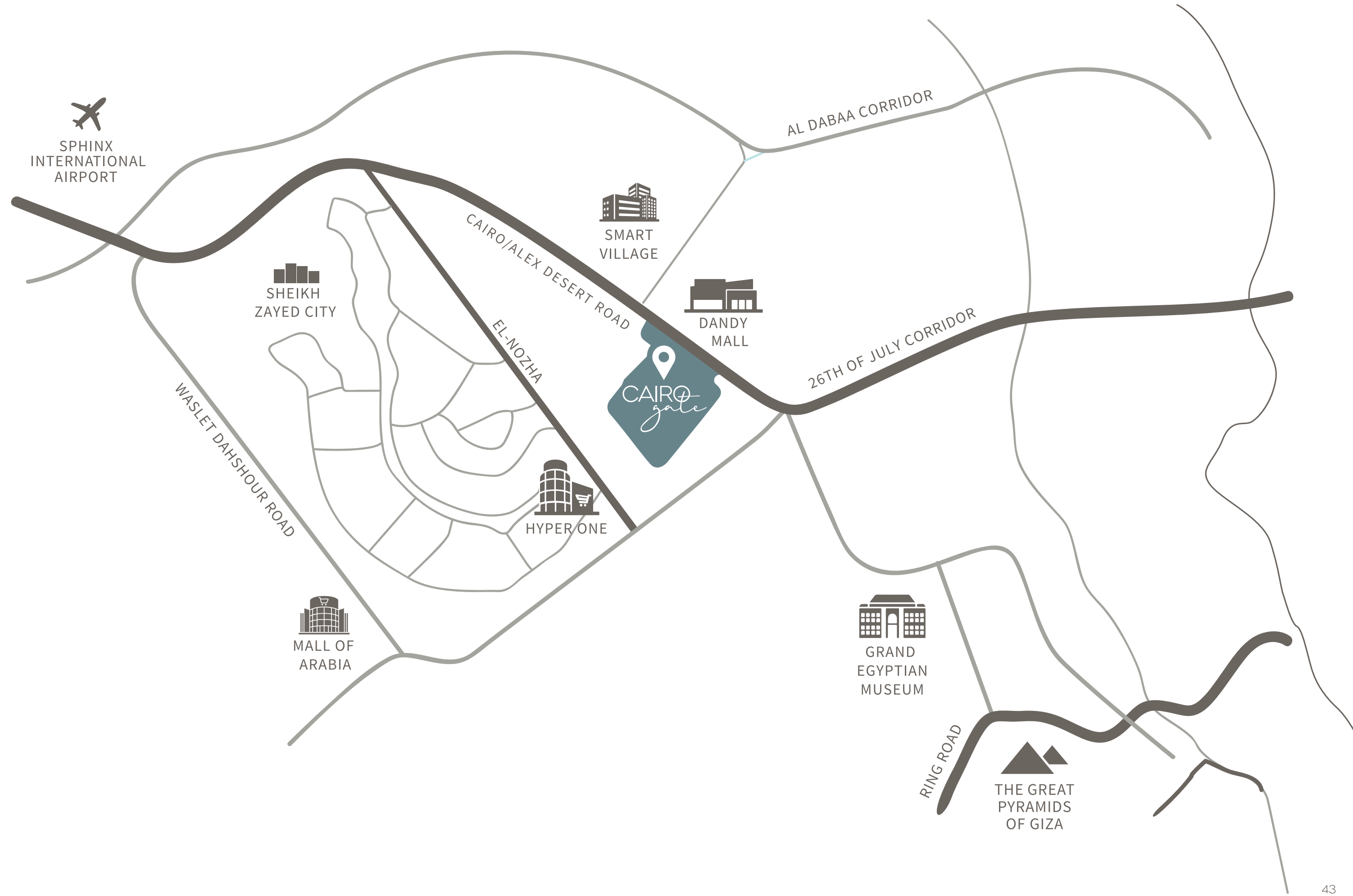
RAYS
SOCIAL CLUB



CLOSE TO EVERYTHING THAT MATTERS

Perfectly situated in the most premium location in Sheikh Zayed.

-  Directly on CAIRO/ALEX DESERT ROAD
-  In front of SMART VILLAGE AND DANDY MALL
-  **10 mins** to HYPERONE MARKET
-  **15 mins** to MALL OF ARABIA
-  **20 mins** to SPHINX INTERNATIONAL AIRPORT
-  **20 mins** to GRAND EGYPTIAN MUSEUM
-  **25 mins** to THE GREAT PYRAMIDS OF GIZA





WORLD CLASS HOSPITALITY

LUXURIOUS HOTEL



A ONE OF A KIND EXPERIENCE

PREMIUM SERVICED RESIDENCES



UPSCALE COMMERCIAL HUB

TOWNSQUARE



REDEFINING WORK LIFE

TOWNSQUARE BOUTIQUE OFFICES

ELIE SAAB
SIGNATURE VILLAS

CAIRO
gate

SITE PLAN





ELIE SAAB SIGNATURE VILLA I

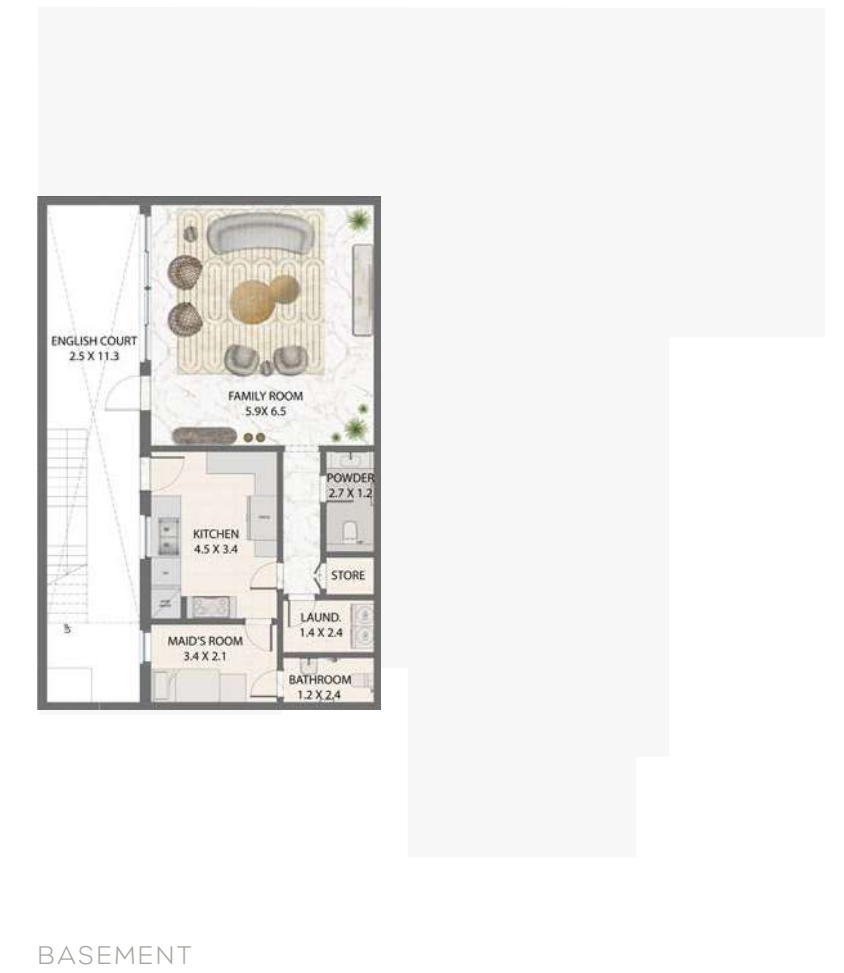




ELIE SAAB SIGNATURE VILLA I

4 EN SUITE BEDROOMS
700 SQM

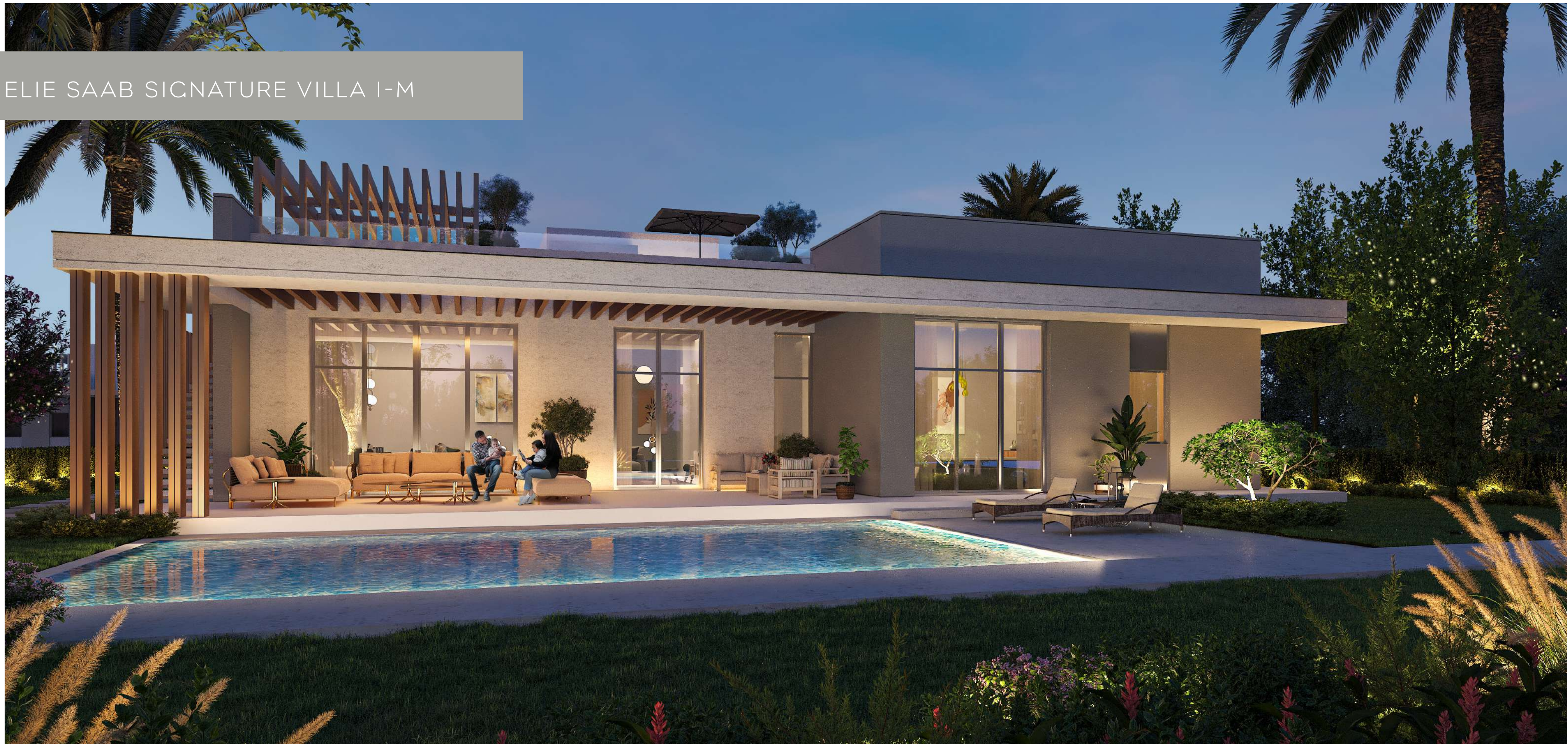
BASEMENT AREA	92 SQM
BASEMENT STAIR & ENGLISH COURT AREA	38 SQM
GROUND FLOOR AREA	297 SQM
GROUND FLOOR TERRACE	66 SQM
ROOFTOP TERRACE	141 SQM
PORCH AND STAIRCASE	30 SQM
GARAGE AREA	36 SQM
TOTAL GROSS AREA	700 SQM
NUMBER OF FAMILY ROOMS	3
NUMBER OF BEDROOMS	4
NUMBER OF BATHROOMS	4
POWDER ROOM	2
NANNY'S ROOM WITH BATHROOM	1
DRIVER'S ROOM WITH BATHROOM	1
CARPORT SPACES	3



DISCLAIMER

1. All room dimensions are measured to structural elements and exclude wall finishes and construction tolerances.
2. All dimensions have been provided by our consultant architects.
3. All materials, dimensions and drawings are approximate, information subject to change without notice.
4. Actual areas may vary from the stated area. Drawings not to scale. The developer reserves the right to make revisions without prior notice.
5. Actual unit areas, front windows, porches, terraces, loggia and exterior trim detail may vary by elevation styles and floor level.

ELIE SAAB SIGNATURE VILLA I-M



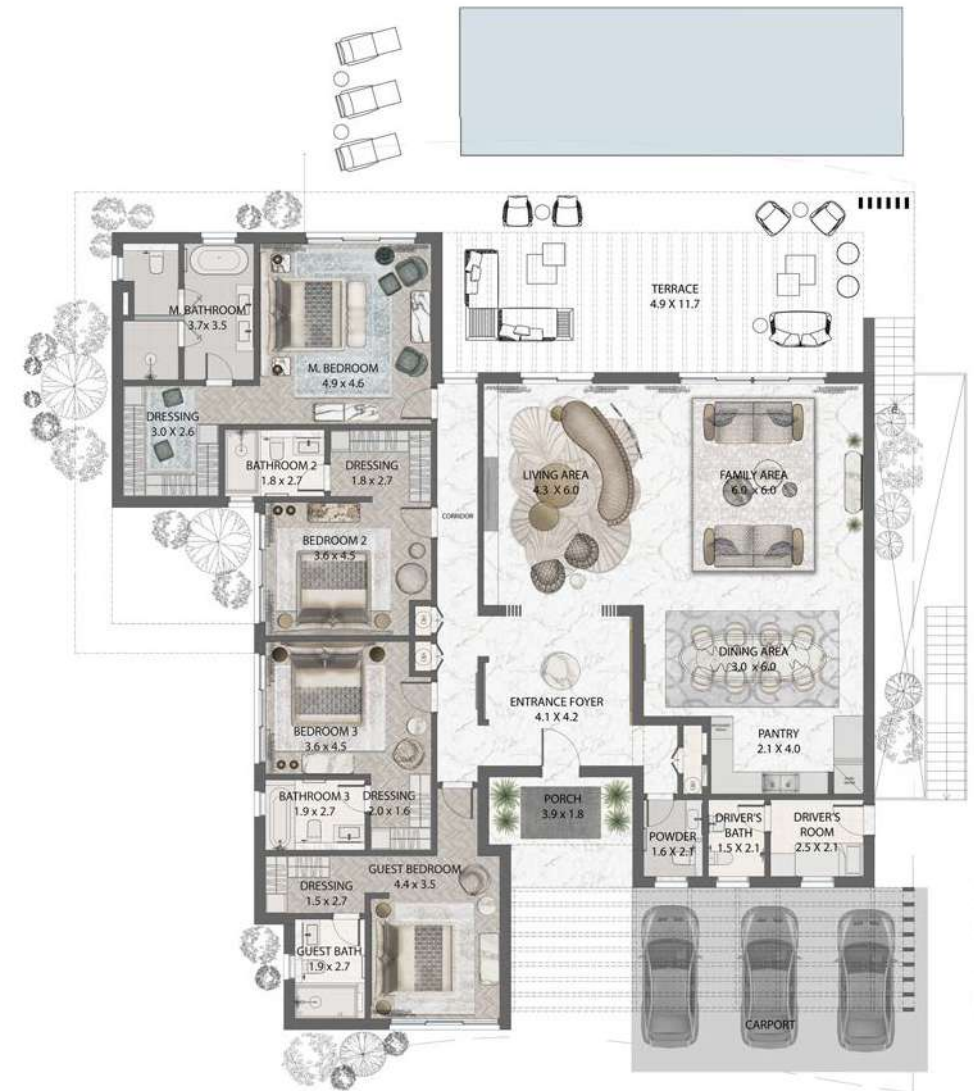


ELIE SAAB SIGNATURE VILLA I-M

4 EN SUITE BEDROOMS
700 SQM

BASEMENT AREA	92 SQM
BASEMENT STAIR & ENGLISH COURT AREA	38 SQM
GROUND FLOOR AREA	297 SQM
GROUND FLOOR TERRACE	66 SQM
ROOFTOP TERRACE	141 SQM
PORCH AND STAIRCASE	30 SQM
GARAGE AREA	36 SQM
TOTAL GROSS AREA	700 SQM

NUMBER OF FAMILY ROOMS	3
NUMBER OF BEDROOMS	4
NUMBER OF BATHROOMS	4
POWDER ROOM	2
NANNY'S ROOM WITH BATHROOM	1
DRIVER'S ROOM WITH BATHROOM	1
CARPORIT SPACES	3



GROUND FLOOR



ROOFTOP



BASEMENT

DISCLAIMER
 1. All room dimensions are measured to structural elements and exclude wall finishes and construction tolerances.
 2. All dimensions have been provided by our consultant architects.
 3. All materials, dimensions and drawings are approximate, information subject to change without notice.
 4. Actual areas may vary from the stated area. Drawings not to scale. The developer reserves the right to make revisions without prior notice.
 5. Actual unit areas, front windows, porches, terraces, loggia and exterior trim detail may vary by elevation styles and floor level.

ELIE SAAB SIGNATURE VILLA | I





ELIE SAAB SIGNATURE VILLA II

5 EN SUITE BEDROOMS

501 SQM

GROUND FLOOR AREA	200 SQM
FIRST FLOOR AREA	193 SQM
TERRACES AREAS	73 SQM
GARAGE AREA	35 SQM

TOTAL GROSS AREA	501 SQM
------------------	---------

NUMBER OF FAMILY ROOMS	2
NUMBER OF BEDROOMS	5
NUMBER OF BATHROOMS	5
POWDER ROOM	1
NANNY'S ROOM WITH BATHROOM	1
DRIVER'S ROOM WITH BATHROOM	1
CARPORT SPACES	3



GROUND FLOOR



FIRST FLOOR

DISCLAIMER

1. All room dimensions are measured to structural elements and exclude wall finishes and construction tolerances.
2. All dimensions have been provided by our consultant architects.
3. All materials, dimensions and drawings are approximate, information subject to change without notice.
4. Actual areas may vary from the stated area. Drawings not to scale. The developer reserves the right to make revisions without prior notice.
5. Actual unit areas, front windows, porches, terraces, loggia and exterior trim detail may vary by elevation styles and floor level.

ELIE SAAB SIGNATURE VILLA | I - M





ELIE SAAB SIGNATURE VILLA II-M

5 EN SUITE BEDROOMS

501 SQM

GROUND FLOOR AREA	200 SQM
FIRST FLOOR AREA	193 SQM
TERRACES AREAS	73 SQM
GARAGE AREA	35 SQM

TOTAL GROSS AREA	501 SQM
-------------------------	----------------

NUMBER OF FAMILY ROOMS	2
NUMBER OF BEDROOMS	5
NUMBER OF BATHROOMS	5
POWDER ROOM	1
NANNY'S ROOM WITH BATHROOM	1
DRIVER'S ROOM WITH BATHROOM	1
CARPORT SPACES	3



GROUND FLOOR



FIRST FLOOR

DISCLAIMER

1. All room dimensions are measured to structural elements and exclude wall finishes and construction tolerances.
2. All dimensions have been provided by our consultant architects.
3. All materials, dimensions and drawings are approximate, information subject to change without notice.
4. Actual areas may vary from the stated area. Drawings not to scale. The developer reserves the right to make revisions without prior notice.
5. Actual unit areas, front windows, porches, terraces, loggia and exterior trim detail may vary by elevation styles and floor level.

ELIE SAAB SIGNATURE VILLA III





ELIE SAAB SIGNATURE VILLA III

4 BEDROOMS
342 SQM

GROUND FLOOR AREA	108 SQM
FIRST FLOOR AREA	116 SQM
PENTHOUSE AREA	31 SQM
COVERED TERRACE AREA	32 SQM
UNCOVERED TERRACE AREA	48 SQM
PORCH AREA	7 SQM

TOTAL GROSS AREA	342 SQM
-------------------------	----------------

NUMBER OF FAMILY ROOMS	1
NUMBER OF BEDROOMS	3
NUMBER OF BATHROOMS	3
POWDER ROOM	1
NANNY'S ROOM WITH BATHROOM	1
DRIVER'S ROOM WITH BATHROOM	1
CARPORT SPACES	3



GROUND FLOOR



FIRST FLOOR



PENTHOUSE

DISCLAIMER

1. All room dimensions are measured to structural elements and exclude wall finishes and construction tolerances.
2. All dimensions have been provided by our consultant architects.
3. All materials, dimensions and drawings are approximate, information subject to change without notice.
4. Actual areas may vary from the stated area. Drawings not to scale. The developer reserves the right to make revisions without prior notice.
5. Actual unit areas, front windows, porches, terraces, loggia and exterior trim detail may vary by elevation styles and floor level.

ELIE SAAB SIGNATURE VILLA III - M





ELIE SAAB SIGNATURE VILLA III-M

4 BEDROOMS
342 SQM

GROUND FLOOR AREA	108 SQM
FIRST FLOOR AREA	116 SQM
PENTHOUSE AREA	31 SQM
COVERED TERRACE AREA	32 SQM
UNCOVERED TERRACE AREA	48 SQM
PORCH AREA	7 SQM

TOTAL GROSS AREA	342 SQM
-------------------------	----------------

NUMBER OF FAMILY ROOMS	1
NUMBER OF BEDROOMS	3
NUMBER OF BATHROOMS	3
POWDER ROOM	1
NANNY'S ROOM WITH BATHROOM	1
DRIVER'S ROOM WITH BATHROOM	1
CARPORT SPACES	3



GROUND FLOOR



FIRST FLOOR



PENTHOUSE

DISCLAIMER

1. All room dimensions are measured to structural elements and exclude wall finishes and construction tolerances.
2. All dimensions have been provided by our consultant architects.
3. All materials, dimensions and drawings are approximate, information subject to change without notice.
4. Actual areas may vary from the stated area. Drawings not to scale. The developer reserves the right to make revisions without prior notice.
5. Actual unit areas, front windows, porches, terraces, loggia and exterior trim detail may vary by elevation styles and floor level.

ELIE SAAB SIGNATURE VILLAS

INTERIOR FINISHES

1. ENTRY FOYER

- FLOORS EUROPEAN MARBLE TILES
- WALLS PAINT (WHITE) / ACCENT WALL COVERINGS
- CEILING PAINT (WHITE)

2. LIVING, DINNING & INTERNAL CORRIDORS

- FLOORS EUROPEAN MARBLE TILES
- WALLS PAINT (WHITE) /ACCENT WALL COVERINGS
- CEILING PAINT (WHITE)

3. KITCHEN

- FLOORS IMPORTED PORCELAIN TILES
- WALLS PAINT (WHITE)
- CEILING PAINT (WHITE)

4. BEDROOMS

- FLOORS UPGRADED ENGINEERED WOOD FLOORING
- WALLS PAINT (OFF-WHITE)
- CEILING PAINT (WHITE)

5. SECONDRY BATHROOMS

- FLOORS IMPORTED PORCELAIN TILES
- WALLS IMPORTED PORCELAIN WITH PAINT
- CEILING PAINT (WHITE)

6. EXCLUSIVE ELIE SAAB MASTER BEDROOM AND POWDER ROOM

- BRANDED ELIE SAAB PORCELAIN FLOORINGS AND WALLS
- VANITIES, TOILETS AND BATHTUB (V I AND V II EXCLUSIVE ELIE SAAB COLLECTION MASTER BATHROOM, V III UPGRADE COLLECTION)

7. KITCHEN CABINETS

- CABINETS: INCLUDED
- APPLIANCES ARE NOT INCLUDED

8. WARDROBES

- INCLUDED IN MASTER BEDROOM ONLY

9. UTILITY ROOMS & BATHROOMS (IF ANY)

- FLOORS PAINT (WHITE)/FULL HEIGHT LOCAL PAINT
- WALLS PORCELAIN TILES IN CASE OF BATHROOMS
- CEILING (WHITE)

10. TERRACES

- FLOORS PORCELAIN TILES
- WALLS PAINT (WHITE)
- CEILING PAINT (WHITE)

11. ALUMINIUM & GLAZING

1. Aluminium Works POWDER COATED ALUMINIUM FRAMES
2. Glass SINGLE GLAZING

12. DOORS

MAIN DOOR: OAK WOODWORK WITH BRASS HANDLE
 BEDROOM DOORS: FLUSH OAK VENEER WOODWORK UPGRADED HARDWARE

13. AIR CONDITIONING UNITS

- CONCEALED AC UNITS FOR RECEPTION LIVING & MASTER BEDROOM
- AC SPLIT UNITS FOR REST OF THE SPACES

14. WATER HEATERS

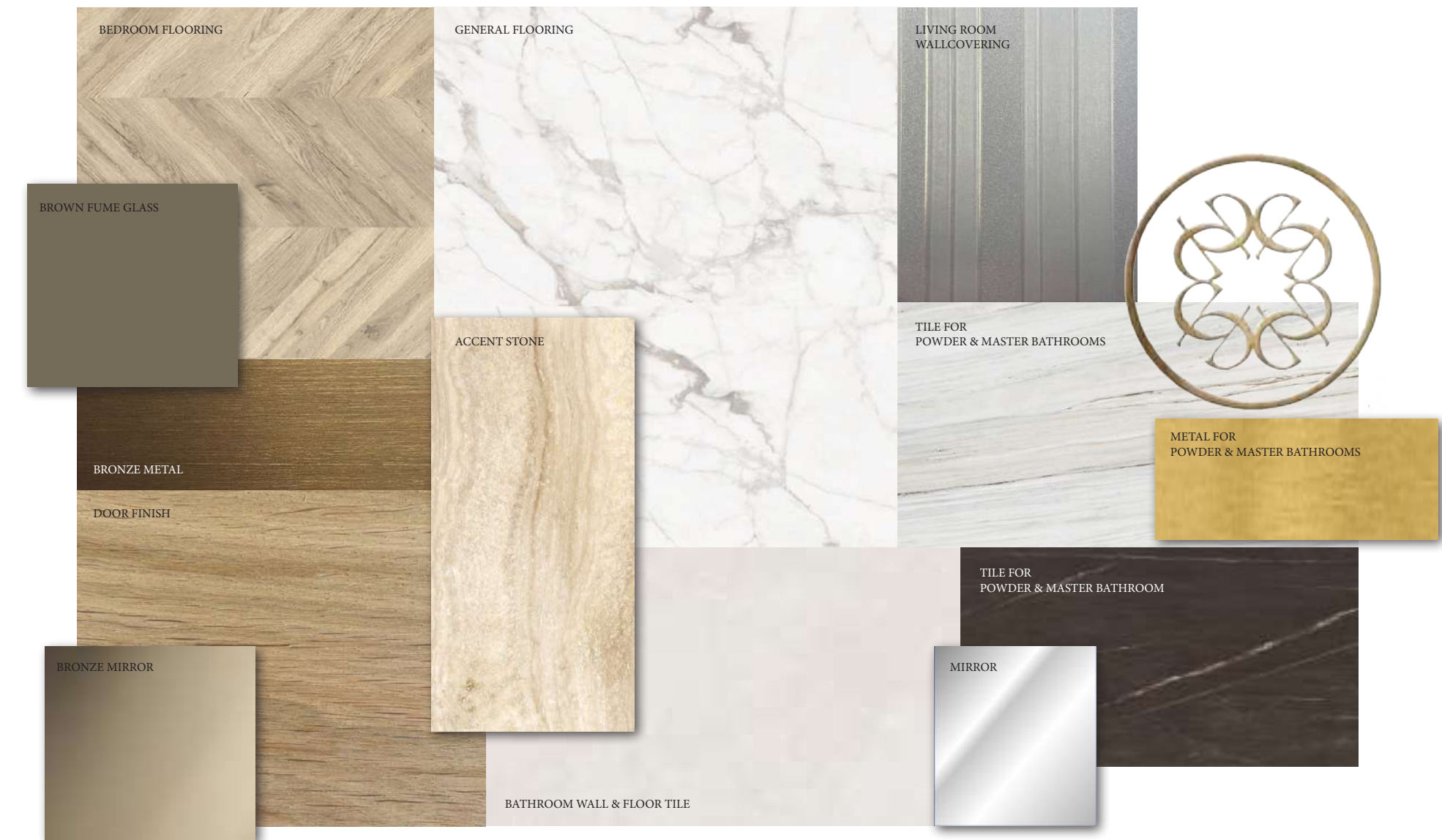
- INCLUDED

15. APPLIANCES & PANTRY (IF ANY)

- NOT INCLUDED

16. EXTERNAL SHUTTERS:

- NOT INCLUDED (ONLY PROVISIONS)



DISCLAIMER

- Furniture and loose items are not included.
- All materials are tentative. Information is subject to change without notice depending on availability of the specified materials. Equivalents will then be installed instead.
- Please refer to the sample boards for all colour / styles of finishes.
- Please note THAT ONLY kitchen and master dressing room are included.
- Any Loose furnishings or furniture will be on a separate list.
- Any extra additions in bathrooms will be offered separately.
- Carport is not included in Villa I II .

ABOUT EMAAR

TRANSFORMING LIFESTYLES SINCE 1997

A leader in the global real estate market, EMAAR has grown over the years to become the largest real estate developer outside of China. You will be investing with one of the best-regarded brands in the world.

16,000+

HAPPY HOMEBUYERS IN EGYPT

PRESENCE IN

12+

GLOBAL MARKETS

4.5 BN USD

MARKET CAP EMAAR DEVELOPMENT

105,500+

HAPPY HOMEBUYERS GLOBALLY

56,000

UNITS COMPLETED TO DATE GLOBALLY

17.4 M SQUARE METER

OF LANDBANK

Developer of **Burj Khalifa** and **Dubai Mall**



ABOUT EMAAR MISR

EGYPT'S MOST PRESTIGIOUS DEVELOPMENTS

Step into a realm of lavish living and vibrant sophistication with Emaar Misr's prestigious and exquisite communities. Upholding its reputation as one of the world's largest and most progressive property developers.

Emaar Misr celebrates a decade of accomplishments with its distinguished gated communities across Egypt: Belle Vie in New Zayed, Cairo Gate in Sheikh Zayed, directly on Cairo/Alex Desert road, Uptown Cairo in the heart of Cairo, Mivida in New Cairo and Marassi in the North Coast.

We develop homes that redefine living standards, putting your needs and aspirations first. We develop thriving neighborhoods that reflect the quality of life you deserve. We create healthy, lively communities that blend extravagance with glamour and white-gloved finesse.



EMAAR MISR SALES CENTERS:

- Capital Business Park: Ground floor B2 building, Sheikh Zayed, Giza
- Uptown Cairo: Emtidad Ramsis St. exit from the 6th of October bridge
- Mivida: Mivida Business Park, Building 1, end of road 90 next to AUC new campus
- New Cairo: 90th Street, Concord Center, B334
- Marassi: Social Hub, Sidi Abdel Rahman, Kilo 133, North Coast Road, Matrouh

www.emaarmisr.com

